

FOR SALE



(23.66m x 6.46m x 3.35m [depth 4.18m])

Topsail schooner – backpackers charter

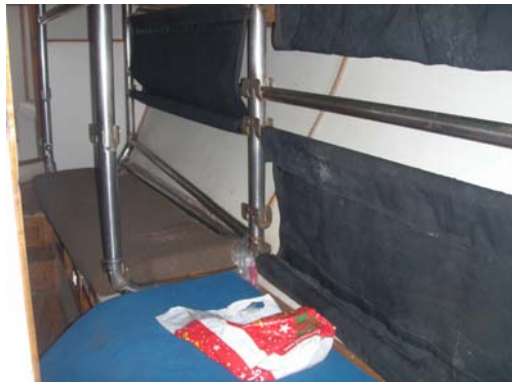
Built:	1973 by Vos & Brijs Shipyards Ltd, Auckland. Single screw, dual station, monohull – all steel. Gross tonnage 99.64t.
Layout:	Raised aft deck, seating for tourist pax aft, steering and sail handling, access hatch to saloon, wheelhouse and galley, access hatch to forward accommodation below and anchoring equipment. Lower deck – engine room aft, small saloon aft, 2x cabins aft, main galley, 2x cabins amidships, 2x cabins forward, toilets and bathrooms.
Engine room:	Cummins NT335M, 6 cyl, approx 175 kW. Indicated hours approx 22,600. Speed approx 10 knots. Gear box – Twin Disc MG513. Aux – Lister, 2 cyl diesel with 25kVA generator, Lister, 3 cyl diesel, with 25 kVA generator. Multi bladed propeller on single shaft.
Steering:	Hydraulic, 2x wheel type helms to single rudder.
Pumps:	Bilge, fire, deck, fuel and house.
Winches:	Anchor winch forward. Capstan on stern. Manual sheet winches to masts and side decks (approx 10 in total).
Sailing equipment:	Mast and Spars – 2x steel masts. Metal boom for aft mast. Rigging – galvanised wire rigging and turnbuckles, timber blocks. Deck equipment – winches and cleats. Sails – fore upper topsails, fore lower topsails, flying jib, jib, main staysail and main sail.
Electrical systems:	12V DC, 24V DC and 240V AC. Shore power voltage & frequency converter. Alternators fitted to main and auxiliary engines. Victron Energie, 1600W inverter/Atlas 24V charger.

Radios and Nav aids:	SSB radio, UHF radio, VHF radio, compass, radar, GPS, rudder indicator, depth sounder.
Other:	Two door refrigerator in the main galley, small refrigerator in Captain's cabin, large chest freezer in saloon galley. Fan in saloon and split system in Lower Deck saloon. Compressor units for refrigeration and ducted air.
Accommodation:	Saloons – Main deck. Access to engine room aft. Access to lower saloon aft. Small galley to port and server to starboard around access to galley below. Access to wheelhouse forward. Lower deck – curved built in seating around table, storage, small sink, bar fridge, fan, lights. Cabins – port sided aft – single berth cabin, double berth cabin. Starboard side aft – on further cabin. Port side amidships – long cabin with canvas style bunk berths, some with mattresses. Starboard side amidships – long cabin with canvas style bunk berths an some with mattresses. 2x Forward foc'sle – watertight doors to 2x cabins with 3 berths in each. Total of 40 canvas type berths for guests and 10 for crew. Bathrooms – washroom with 2x s/s wash basins. Another 2x toilets aft of cabins. Shower cubicle and wash basin.
Galley:	Main galley - 4 burner gas stove and oven, built in refrigerators x2, s/s bench tops, narrow sink and large sink with tap, walk in pantry, storage. Saloon galley – hot water, large chest freezer, s/s bench tops, double s/s sink, storage.
Safety equipment:	78 coastal life jackets. 2x 25 person life rafts. Class 3B for 50 persons.
Certificate of Fiji Registry:	No 141, Director of marine with the consent of the Minister of Infrastructure and Public Utilities. 17/9/97.
Survey:	Marine Board Fiji – survey issued 13/7/2012, Class 3B for 50 persons.
Vessel's history:	Vessel originally built as the sail training ship "Spirit of Adventure" 1973, New Zealand. During her time as a sail training vessel she carried many thousands of young people to sea safely and consistently. She has an enviable reputation as a well proven, comfortable, easy riding ship which could withstand all that nature managed to throw at her. In 1997 vessel was sold and relocated to Fiji to run adventure voyages in the Fiji Islands. Renamed she has operated successfully and consistently on 7 night voyages to the Yasawa's. Latterly, vessel has operated on day cruises and charters from Denarau Marina.
Broker comments:	Vessel has been well built and generally in the past she has been cared for and loved, however, her interior is now looking tired and dated. Vessel really needs a major freshen up to her interior fittings and fixtures. Vessel has the reputation of a tremendous sea going vessel. She is fitted out to carry up to 30 pax in bunk style arrangements. Available on request - steel hull ultrasonic thickness test dated June 2010 (1 page easy to read showing good test result).

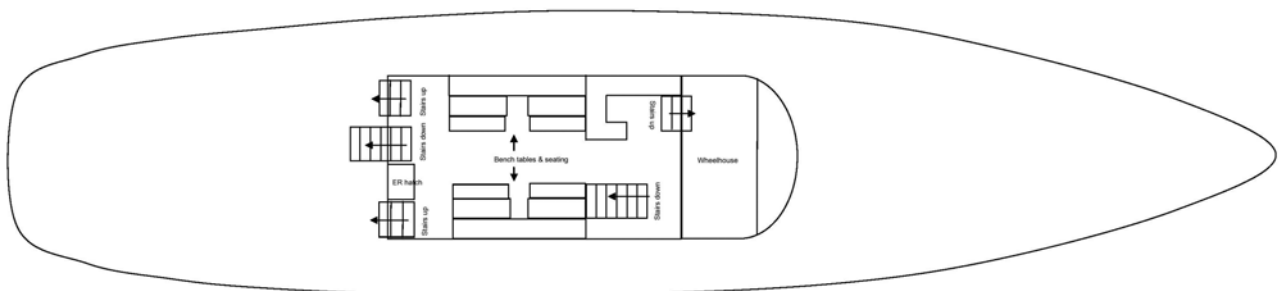
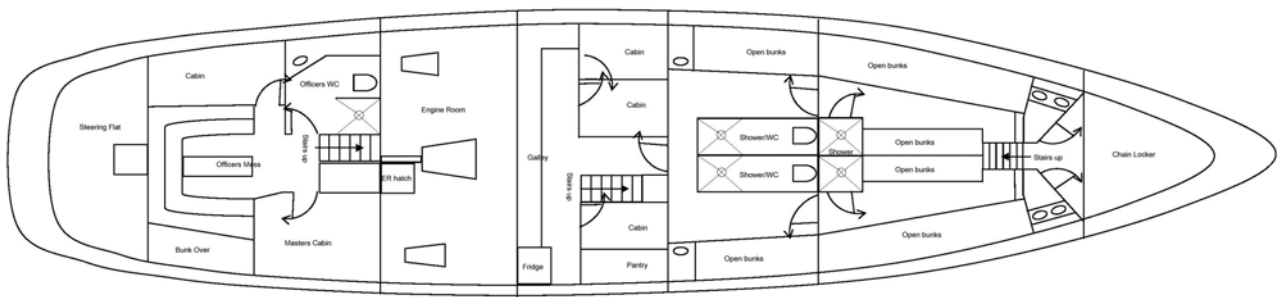
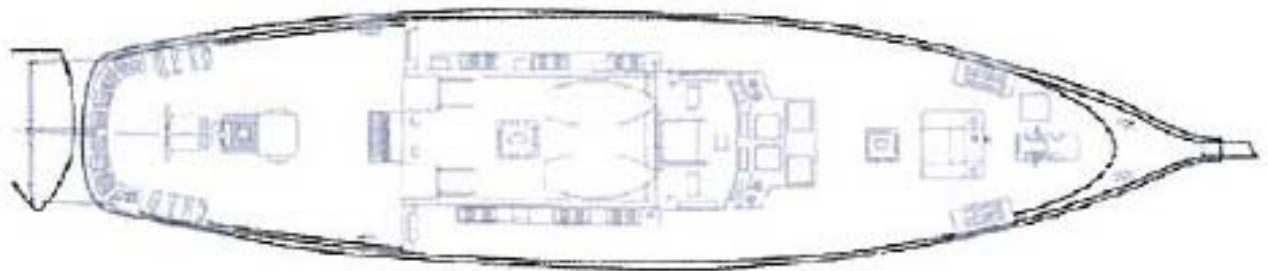
Asking NZ\$260,000. Make offer!







This spec sheet has been prepared from information supplied to us by the seller.
Buyers should be very careful to make their own enquiries on all aspects. Look before you leap!



This spec sheet has been prepared from information supplied to us by the seller. Buyers should be very careful to make their own enquiries on all aspects. Look before you leap!