

RLG EVO ^{(C11) - (C60)}

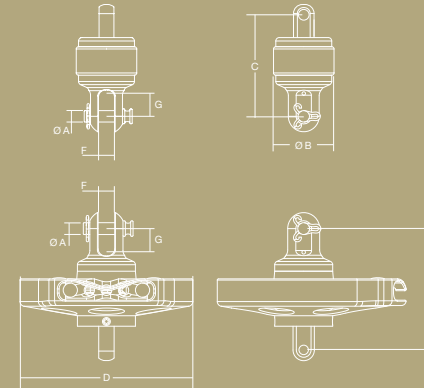
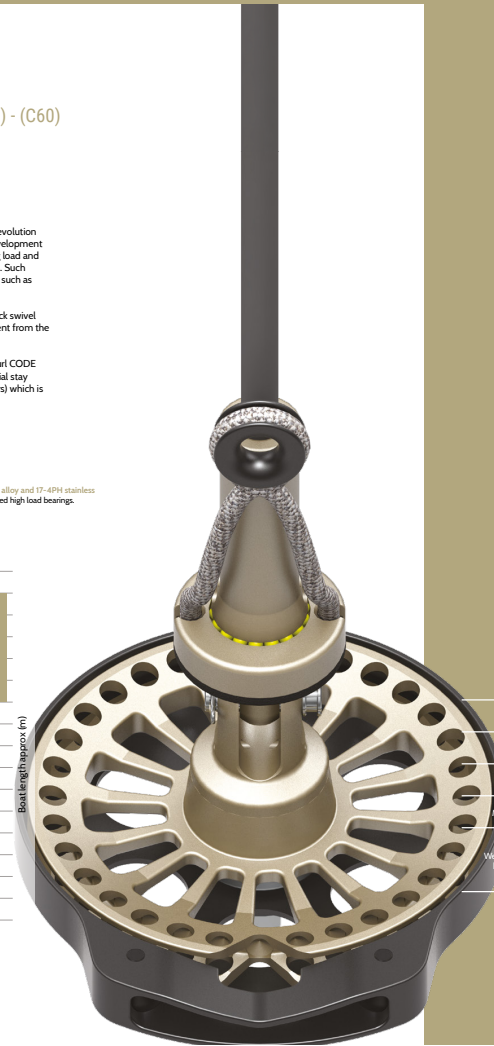
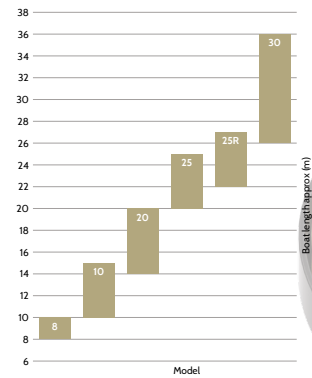
furling system for Gennakers

New furling system for Gennakers (sails with free flying luff), an evolution of the well-known and patented ROLLGEN system. This new development is characterized by both higher performances in terms of working load and smoothness in movement, and weight decrease by roughly 60%. Such characteristics have been obtained thanks to the use of materials such as Ergal aluminum alloy and 17-4PH steel.

Differently from the previous model, in the new RLG EVO, the tack swivel (fundamental element when furling free flying sails) is independent from the drum. In fact, it is now integral part of the special ROLLGEN stay.

Consequently, drum and halyard swivel may as well be used to furl CODE O-type sails (sails hoisted on anti-torsion stay), whereas the special stay totally integrates the furling system for free flying sails (Gennakers) which is Bamar ROLLGEN "patent".

+ Easy endless line loading. You do not have to take the drum apart. + Made of Ergal aluminum alloy and 17-4PH stainless steel. It makes use of sealed high load bearings.



Model	Ø A mm	Ø B mm	C mm	D mm	E mm	F mm	G mm
08	8	45	78	110	91	13	15
10	10	48	89	146	102	14	17
20	12	60	113	210	127	18	22.5
25	16	76	136	260	144	25	28
25R	18	78	136	260	150	21	31
35	22	103	152	299	193	25	32

Model	8	10	20	25	25R	35
Drum Ø mm	110	146	210	260	260	299
Stay Ø mm	13	15	18	-	-	-
Max stay length (m)	15	std 17/ 3K 20	std 22 / 3K27	-	-	-
Max. sail area (m² approx)	95	150 / 170	180 / 210	-	-	-
Weight kg						
	Halyard swivel	0.27	0.34	0.88	1.25	1.42
Drum	0.54	0.73	1.61	2.80	2.95	5.52
Working load kg	2000	3000	5000	8000	10000	15000

ROLLGEN STAY KIT^(C64)

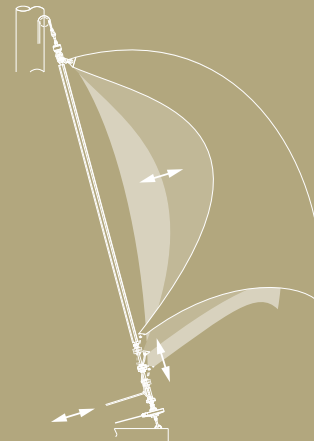
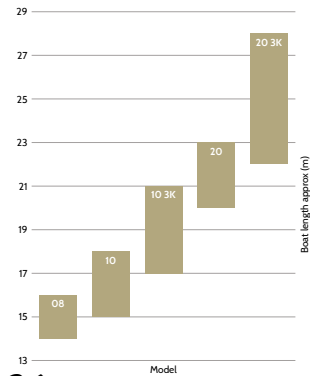
special stay for RLG EVO

PATENTED

RollGen is the special patented stay that may furl Gennakers and less specifically all sails with free flying luff. The stay is made of a special anti-torsion stay that may transmit the furling torque to the sail head. It is covered by a special EPDM gaiter that absorbs compression stress that would weigh down upon the sail cloth. Furthermore, the gaiter allows for the sail to furl on a bigger diameter compared to the naked stay. While furling out, it allows the sail to unroll at different speeds, since it absorbs stress that would weigh upon the sail and would make the furling out operation not correct or impossible. These elements make of RollGen a unique and patented furler that is different from other existing systems that are only apparently similar systems. The standard RollGen anti-torsion stay is made of unidirectional special fibres realized in kits with maximum lengths and different sizes. For RLG EVO 10 and 20 we may supply a special high performance 3K stay made with inextensible material in order to enhance its torsional capacity, in order to adapt it to longer lengths. In any case, this stay supplied can be easily adapted to the measure taken onboard. The measuring and cutting operation is very simply done with the use of simple tools that are included in the kit. After having furled the Gennaker on the special RollGen stay, you may disconnect drum and halyard swivel by means of quick release pins. These may be thus used in order to furl other sails, such as Code O or Drifters.

The "Luff Control" completes the system. It is a double swivel that matched with the ROLLGEN stay allows you to adjust the tension of the Gennaker luff by pulling on a line from the cockpit. The "Luff Control" may be fitted on existing ROLLGEN systems as well. Furthermore, it allows you to significantly "shorten" the luff when closing in the sail, thus placing the luff closer to the ROLLGEN stay. This operation will make furling simpler and faster, especially when you are making use of "deep" cut sails with long luffs which are usually more difficult to furl.

- + Luff Control allows you to adjust the sail luff tension.
- + The existing gennaker doesn't need modifications.
- + The patented stay is covered by a special gaiter which protects the sail and allows for the correct furling/unfurling.
- + The swivels integrated in ROLLGEN stay lower clamp.



Model	A mm	Ø B mm
08	28	13
10	39	15
10 3K	39	13
20	48	18
20 3K	48	18

Model	8	10	10 3K	20	20 3K
Max stay length m	15	17	20	22	27
Stay Ø mm	13	15	13	18	18
Weight kg/m	0.25	0.48	0.46	0.73	0.76
Working load kg	900 kg	1500	1500	2500	2500

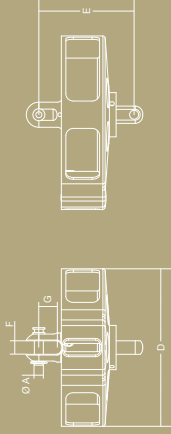
RLG EVO S (C11) - (C60)

furling system for structural stays

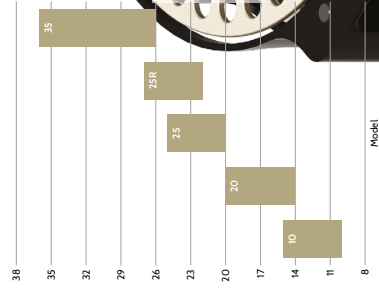
New furling system for structural stays, evolution of the wide, heavy and patented ROLGEN system. This latest innovation is characterized by a line steering drum to be used in combination with NO TORISON stays.

Light weight and low inertia. These characteristics are obtained thanks to the use of materials such as Ergal and T74-PT steel.

It is manufactured from aluminum blocks thanks to the use of CNC machines and makes use of high load bearings in order to allow for the parts to slide perfectly.



+ **It makes use of sealed high load bearings.** + **Rotational and axial dimensions. It allows you keep the sail taut.**



Model	O.A. mm	O.B. mm	C mm	D mm	E mm	F mm	G mm
20	12	60	113	210	107	18	22.5
25	16	76	139	260	144	25	28
25SR	16	76	136	240	150	21	31
35	22	100	172	300	194	25	31

Model	Pin Ø mm	Drum Ø mm	Ø 6 mm line max. stowage m	Weight kg	Max. Wt. kg
20	17	210	13	0.88	5000
25	16	260	17	1.25	8000
25SR	18	240	24	1.42	10000
35	21	300	24	3.60	15000



Optional EVO

Luff control

It is a double swivel that matched with the ROLLGEN stay allows you to adjust the tension of the Gennaker luff by pulling on a line from the cockpit. Luff Control may be fitted on ROLLGEN stays as well. Furthermore, it may be fitted on the ROLLGEN luff when standing in the sail, thus placing the luff closer to the ROLLGEN stay.



Stay kit Rollgen compatibility					
8	10	20	20.3K	20.3K	
✓	✓	✓	✓	✓	

Snap Shackles

Fixed quick release device that may be fitted underneath the drum in order to speed up installation on deck.



RLG EVO compatibility					
8	10	20	25	25R	35
✓	✓	✓	custom	✗	✗
RLG EVO S compatibility					
20 S	25 S	25 SR	25 SR	35 S	
✓	custom	✗	✗	✗	

Double lashing pin

Pin with double slot to house either a high load loop or a lashing to connect halyard swivel / drum to halyard or fittings onboard. Combined with the special high load pulley and loop, it creates halyard Z1 purchase



RLG EVO compatibility					
8	10	20	25	25R	35
✗	✗	✓	✓	✓	✗
RLG EVO S compatibility					
20 S	25 S	25 SR	25 SR	35 S	
✓	✓	✓	✓	✗	

Pulley 2:1

High load pulley that together with a textile loop and double lashing pin may be used for halyard Z1 purchase



RLG EVO compatibility					
8	10	20	25	25R	35
✗	✗	✓	✓	✓	✗
RLG EVO S compatibility					
20 S	25 S	25 SR	25 SR	35 S	
✓	✓	✓	✓	✗	

Optional EVO

Solid sheave

Special "sliding" element made to be fitted underneath EVO ZSR drum to create a 2:1 or 3:1 tackle to tension the stay.



		RLG EVO compatibility			
		8	10	20	25
		✓	✗	✗	✗
					25 SR
					35 S
					custom
		RLG EVO S compatibility			
		20 S	25 S	25 SR	35 S
		✗	✗	✓	✗

Endless Line Kit

Enables the kit used to be fitted on drums. Made for purpose with a cover that gives the kit the same feel as the EVO pulleys. Equipment is made for the same feeling when used. It is available in different lengths and in two diameters: 8 mm and 10 mm. The kit includes aatchet shackle, a loop and a snap shackle to lock it on deck.

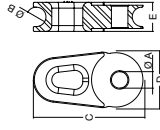


		RLG EVO compatibility			
		8	10	20	25
		✓	✓	✓	✓
					25 SR
					35 S
					custom
		RLG EVO S compatibility			
		20 S	25 S	25 SR	35 S
		✗	✗	✗	✗

32

Thimbles

Special fittings to complete textile running rigging and stays. Made in black Anodized and High Aluminium duty.



Thimble model	ØA	ØB	C	D	E
	mm	mm	mm	mm	mm
08	8.5	10	57	30	15
10	10.5	12	69	36	16
20	16.5	16	83	44	19



		RLG EVO compatibility			
		8	10	20	25
		✓	✓	✓	✓
					25 SR
					35 S
					custom
		RLG EVO S compatibility			
		20 S	25 S	25 SR	35 S
		✓	✓		

Joint Swivel

Special lock swivel fitting made in aluminium and stainless steel to be available from the upper part of each drum. It allows you to connect the stay to the drum. When connected to RLG EVO custom stays it allows you to lift free flying sails such as Genakers, Asymmetric Spinnakers. The loop to connect the sail tack is not supplied.



		RLG EVO compatibility			
		8	10	20	25
		✗	✗	✗	✓
					25 SR
					35 S
					custom
		RLG EVO S compatibility			
		20 S	25 S	25 SR	35 S
		✗	✓	✓	✗
		Motorized furlers compatibility			
		BWSZ10 L	PE/PA10 L	SHIPSET10 L	
		✓	✓	✓	✓

33