



# Bulletin océanographique



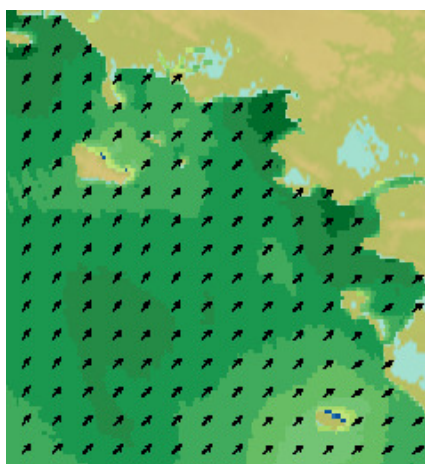
Généré le 26-10-2022

<b>Cartes</b>	<b>2</b>
<b>Océanogrammes</b>	<b>10</b>
<b>Horaires de marées</b>	<b>11</b>

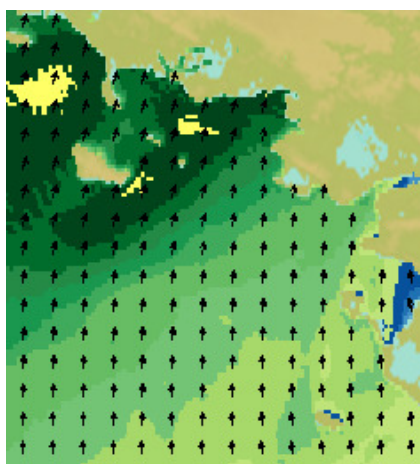


L'océan en référence

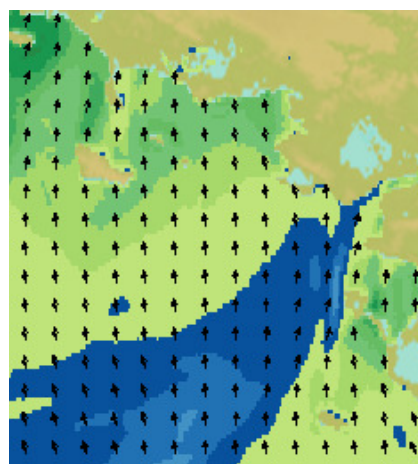
## Vitesse et direction du vent



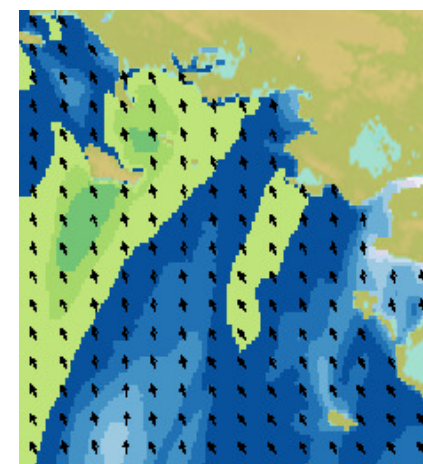
26/10/2022 00:00:00 UTC+2 (10 m)



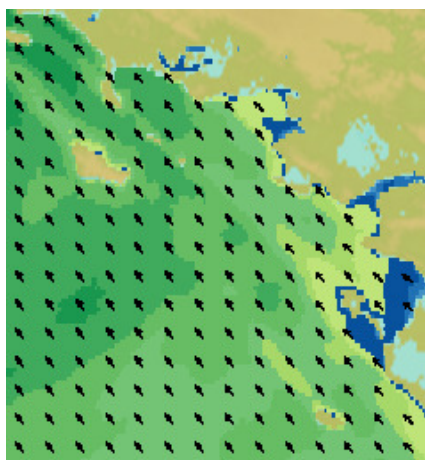
26/10/2022 06:00:00 UTC+2 (10 m)



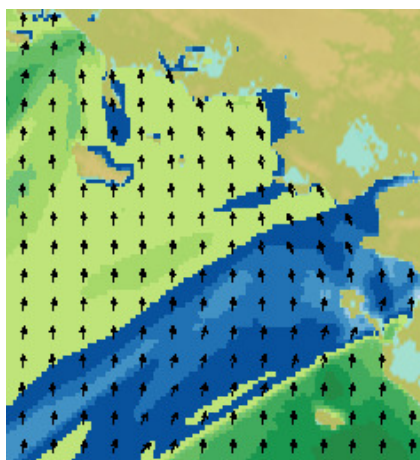
26/10/2022 12:00:00 UTC+2 (10 m)



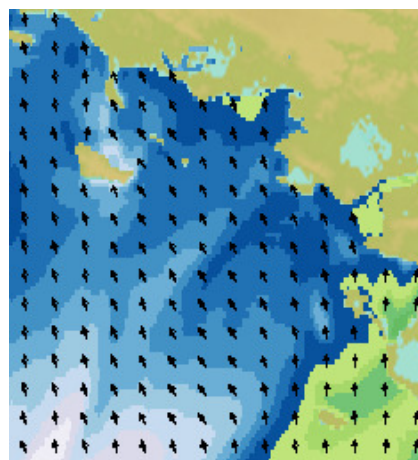
26/10/2022 18:00:00 UTC+2 (10 m)



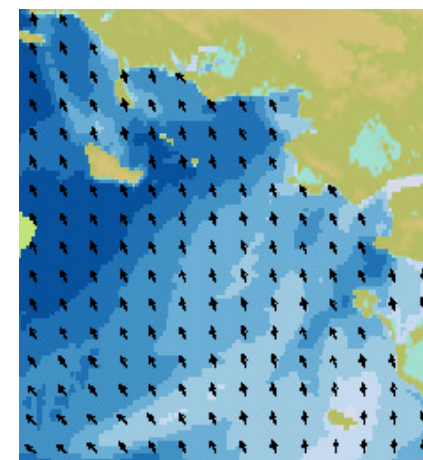
27/10/2022 00:00:00 UTC+2 (10 m)



27/10/2022 06:00:00 UTC+2 (10 m)

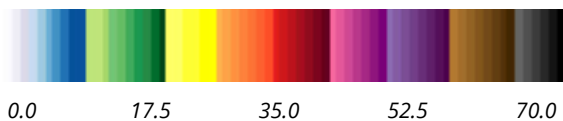


27/10/2022 12:00:00 UTC+2 (10 m)



27/10/2022 18:00:00 UTC+2 (10 m)

Unité noeuds



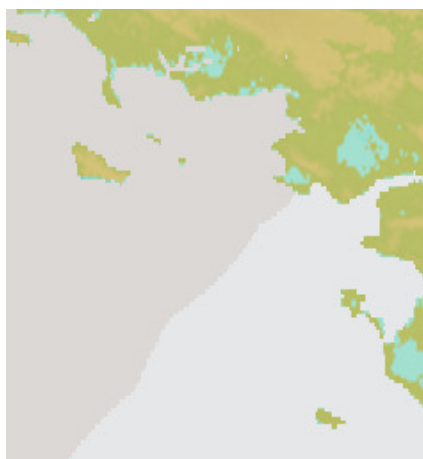
Informations sur les modèles utilisés :

"METEO\_AROME\_R1100\_EURW1S100-MER"(MAJ: 2022-10-26 00:00:00) - source : CEPMMT et Météo-France,

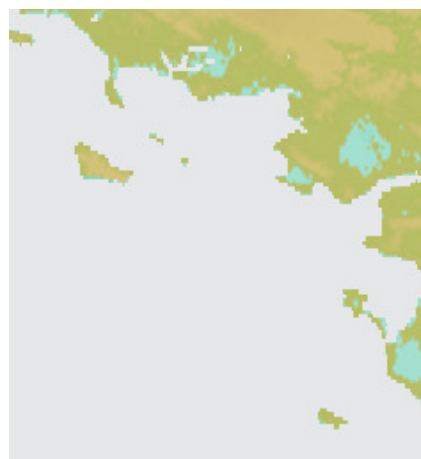
"METEO\_ARPEGE\_R1000\_EURAT01-MER"(MAJ: 2022-10-26 00:00:00) - source : CEPMMT et Météo-France



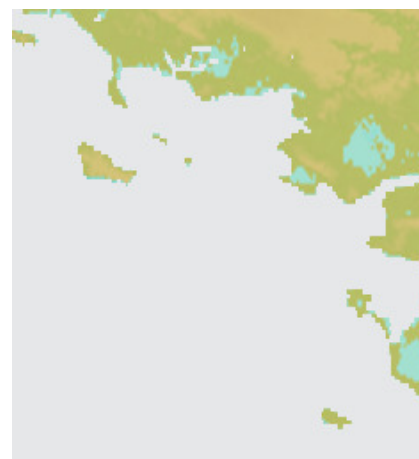
## Pression atmosphérique en surface



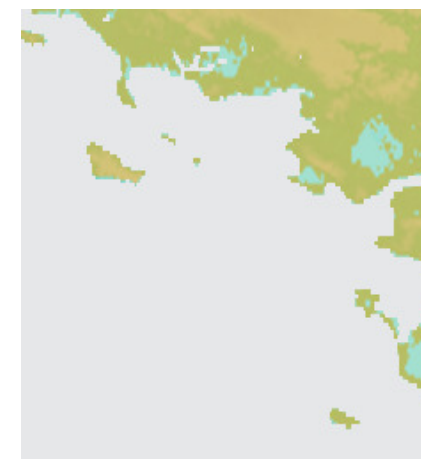
26/10/2022 00:00:00 UTC+2 (0 m)



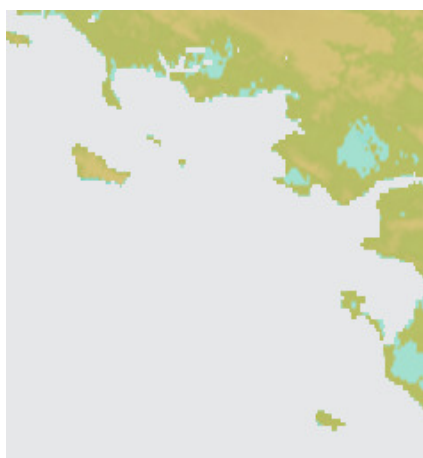
26/10/2022 06:00:00 UTC+2 (0 m)



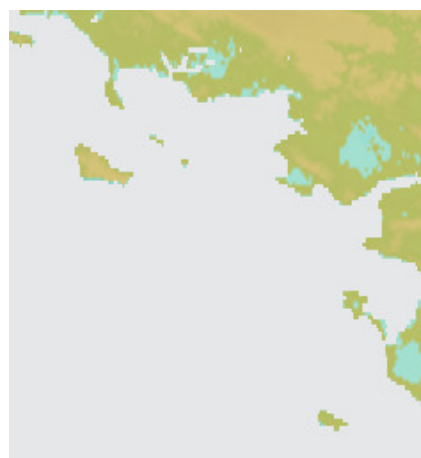
26/10/2022 12:00:00 UTC+2 (0 m)



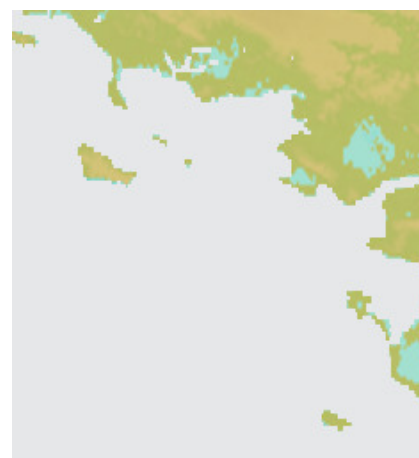
26/10/2022 18:00:00 UTC+2 (0 m)



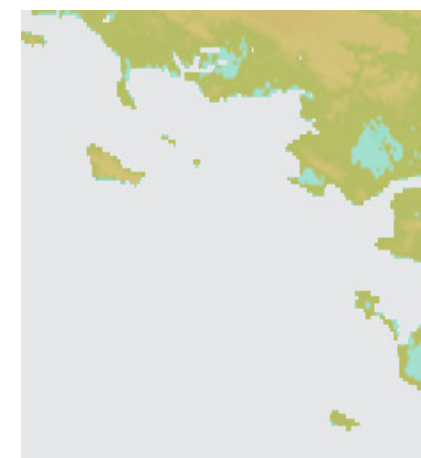
27/10/2022 00:00:00 UTC+2 (0 m)



27/10/2022 06:00:00 UTC+2 (0 m)

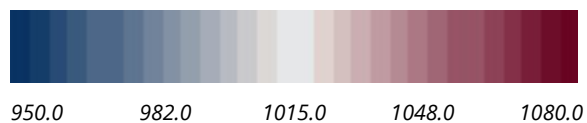


27/10/2022 12:00:00 UTC+2 (0 m)



27/10/2022 18:00:00 UTC+2 (0 m)

Unité hPa

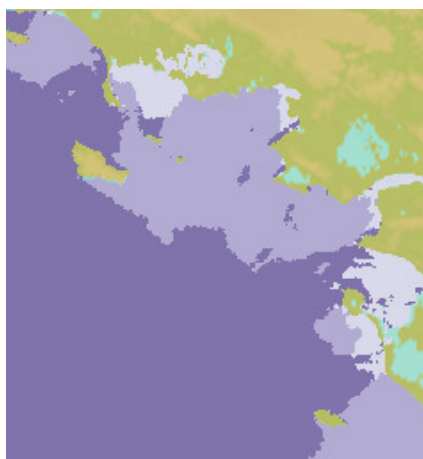


Informations sur les modèles utilisés :

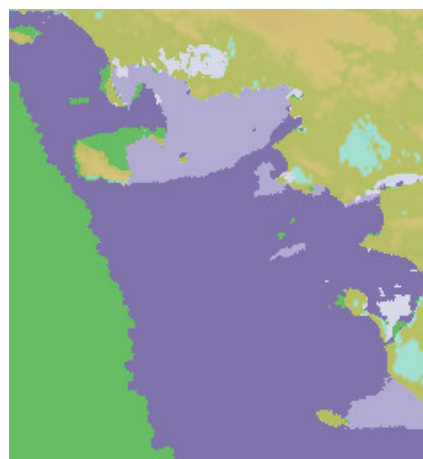
"METEO\_AROME\_R1100\_EURW1S100-MER"(MAJ: 2022-10-26 00:00:00) - source : CEPMMT et Météo-France,

"METEO\_ARPEGE\_R1000\_EURAT01-MER"(MAJ: 2022-10-26 00:00:00) - source : CEPMMT et Météo-France

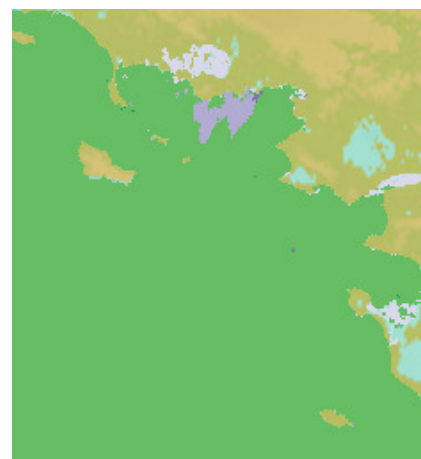
### Periode mer totale



26/10/2022 00:00:00 UTC+2 (0 m)



26/10/2022 06:00:00 UTC+2 (0 m)



26/10/2022 12:00:00 UTC+2 (0 m)



26/10/2022 18:00:00 UTC+2 (0 m)



27/10/2022 00:00:00 UTC+2 (0 m)



27/10/2022 06:00:00 UTC+2 (0 m)

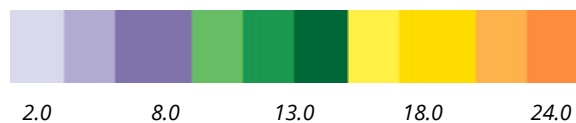


27/10/2022 12:00:00 UTC+2 (0 m)



27/10/2022 18:00:00 UTC+2 (0 m)

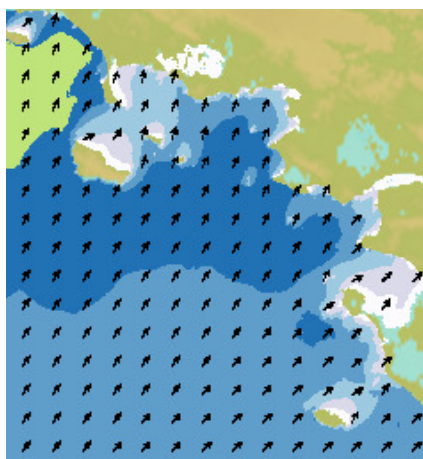
Unité s



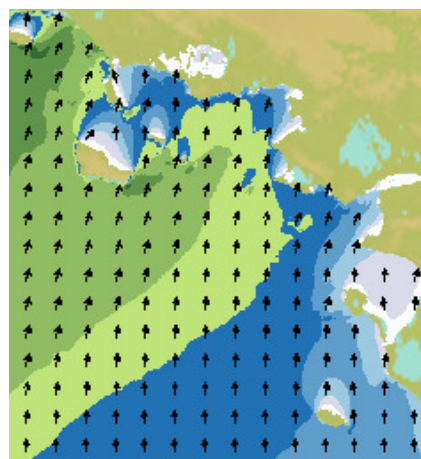
Informations sur les modèles utilisés :

"VAGUES\_WW3\_R1132\_LOIRE-200M"(MAJ: 20221026 00:00:00) - source : Shom et Météo France

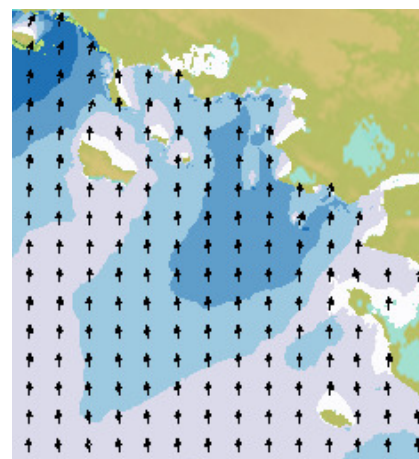
### Mer du vent (hauteur et direction)



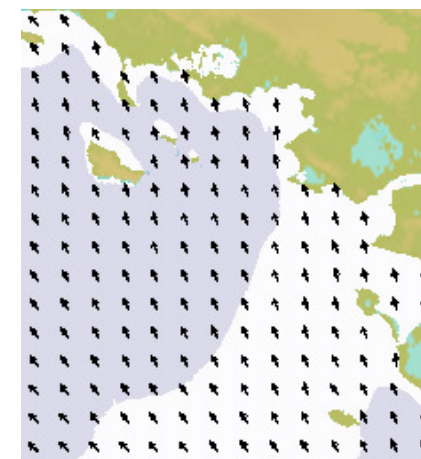
26/10/2022 00:00:00 UTC+2 (0 m)



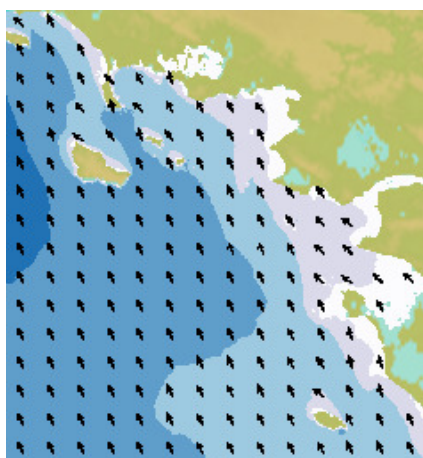
26/10/2022 06:00:00 UTC+2 (0 m)



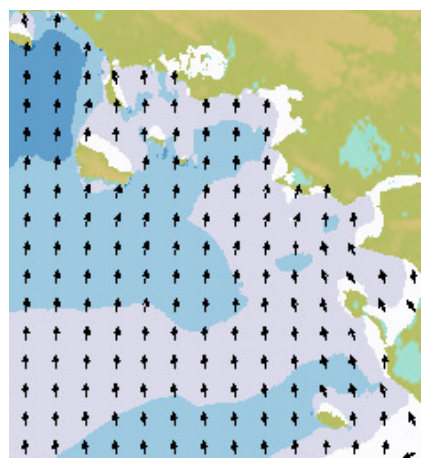
26/10/2022 12:00:00 UTC+2 (0 m)



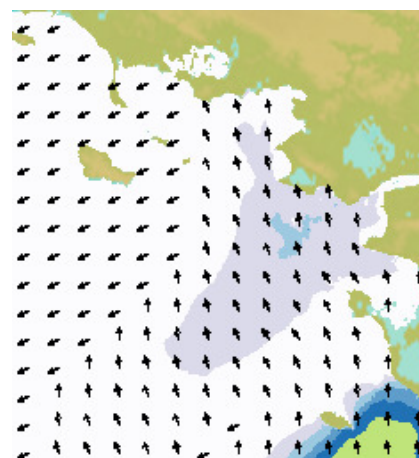
26/10/2022 18:00:00 UTC+2 (0 m)



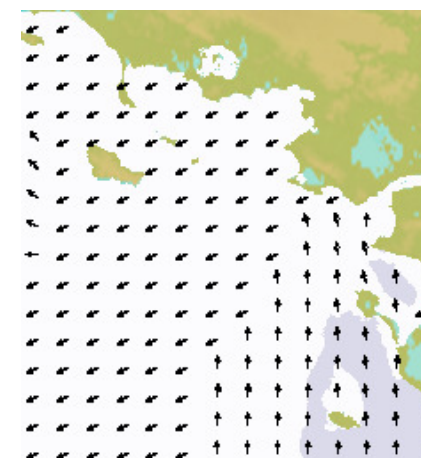
27/10/2022 00:00:00 UTC+2 (0 m)



27/10/2022 06:00:00 UTC+2 (0 m)



27/10/2022 12:00:00 UTC+2 (0 m)



27/10/2022 18:00:00 UTC+2 (0 m)

Unité m

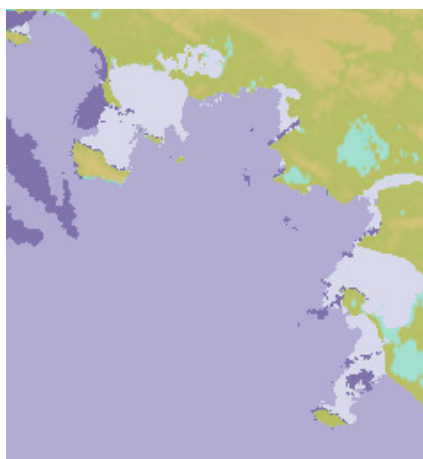


0.0      3.8      7.5      11.2      15.0

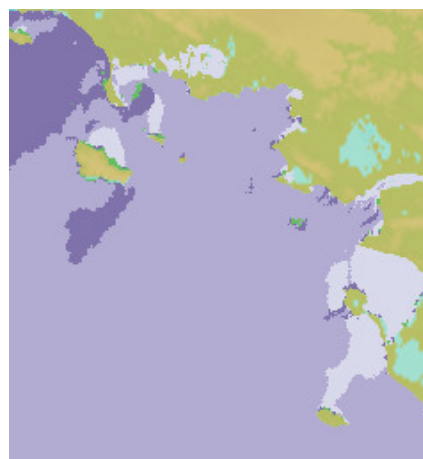
Informations sur les modèles utilisés :

"VAGUES\_WW3\_R1132\_LOIRE-200M"(MAJ: 20221026 00:00:00) - source : Shom et Météo France

### Periode mer du vent



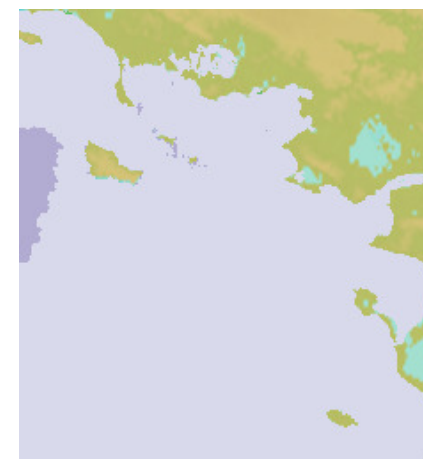
26/10/2022 00:00:00 UTC+2 (0 m)



26/10/2022 06:00:00 UTC+2 (0 m)



26/10/2022 12:00:00 UTC+2 (0 m)



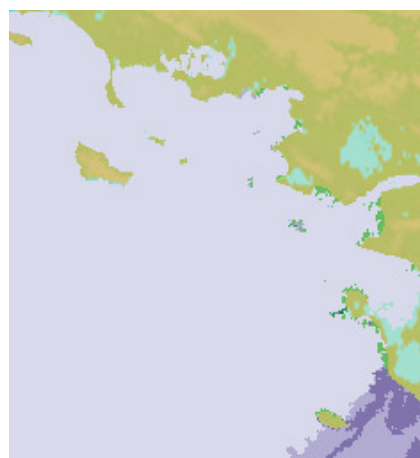
26/10/2022 18:00:00 UTC+2 (0 m)



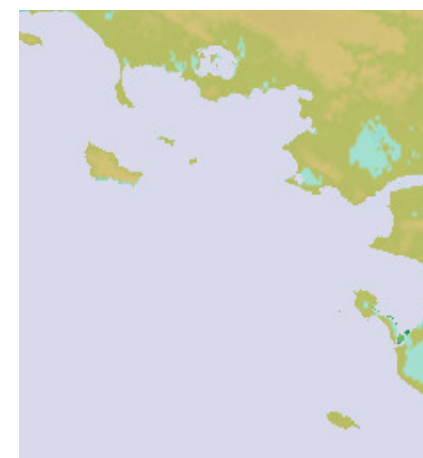
27/10/2022 00:00:00 UTC+2 (0 m)



27/10/2022 06:00:00 UTC+2 (0 m)

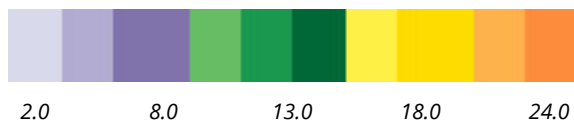


27/10/2022 12:00:00 UTC+2 (0 m)



27/10/2022 18:00:00 UTC+2 (0 m)

Unité s

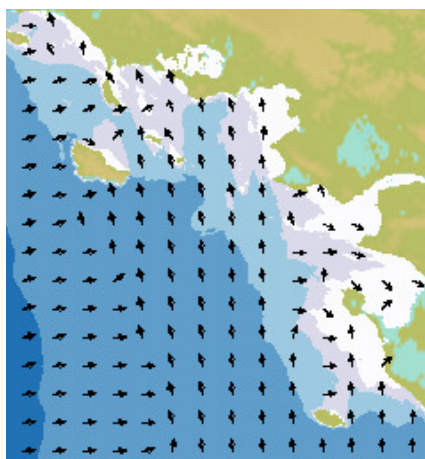


Informations sur les modèles utilisés :

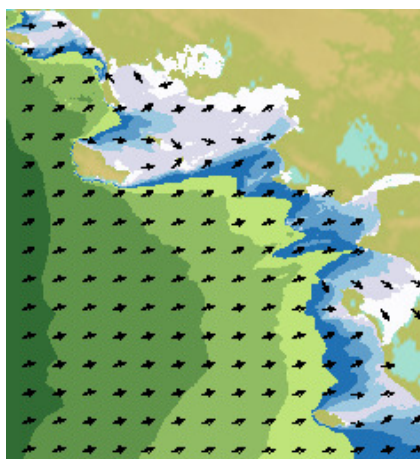
"VAGUES\_WW3\_R1132\_LOIRE-200M"(MAJ: 20221026 00:00:00) - source : Shom et Météo France



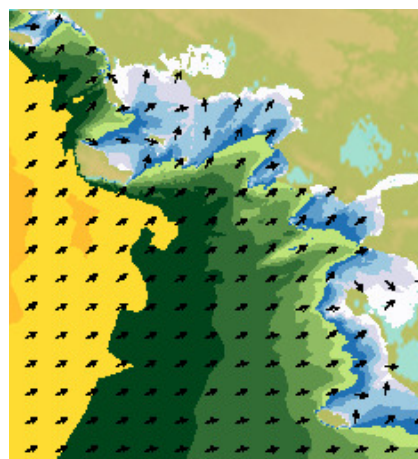
### Houle primaire (hauteur et direction)



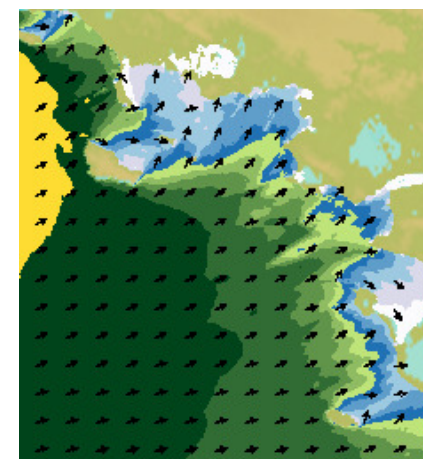
26/10/2022 00:00:00 UTC+2 (0 m)



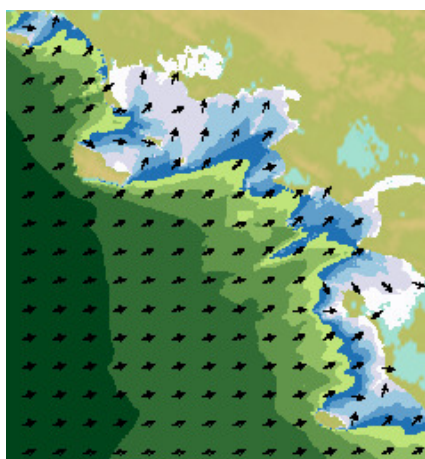
26/10/2022 06:00:00 UTC+2 (0 m)



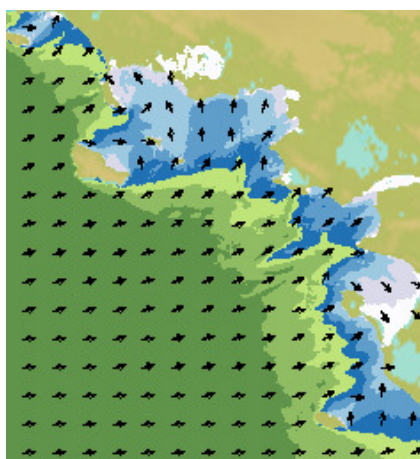
26/10/2022 12:00:00 UTC+2 (0 m)



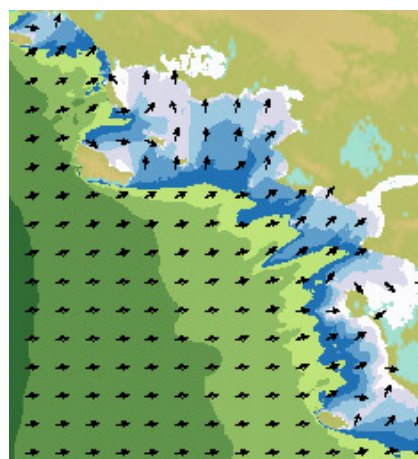
26/10/2022 18:00:00 UTC+2 (0 m)



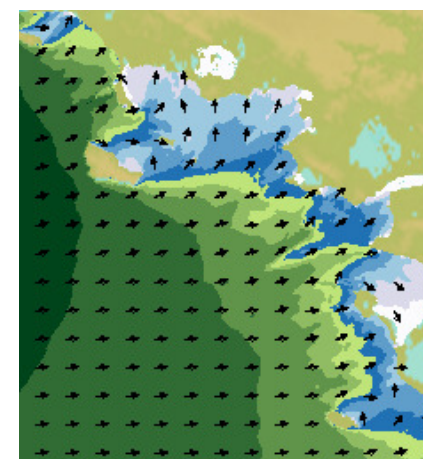
27/10/2022 00:00:00 UTC+2 (0 m)



27/10/2022 06:00:00 UTC+2 (0 m)



27/10/2022 12:00:00 UTC+2 (0 m)



27/10/2022 18:00:00 UTC+2 (0 m)

Unité m



0.0      3.8      7.5      11.2      15.0

Informations sur les modèles utilisés :

"VAGUES\_WW3\_R1132\_LOIRE-200M"(MAJ: 20221026 00:00:00) - source : Shom et Météo France

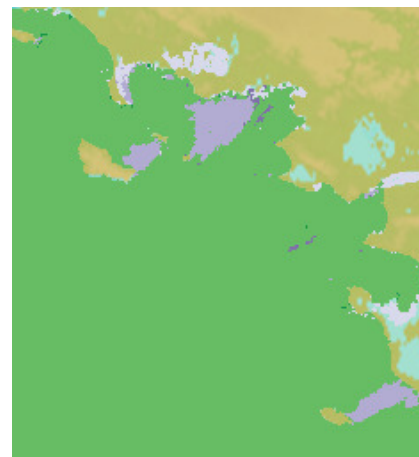
### Periode houle primaire



26/10/2022 00:00:00 UTC+2 (0 m)



26/10/2022 06:00:00 UTC+2 (0 m)



26/10/2022 12:00:00 UTC+2 (0 m)



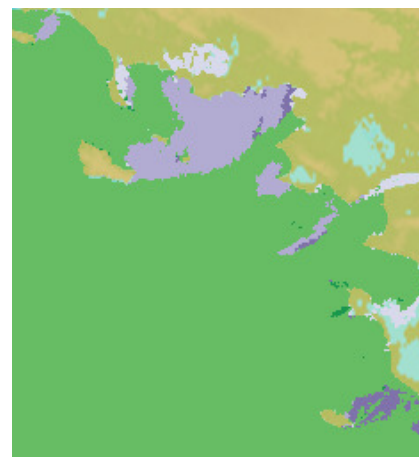
26/10/2022 18:00:00 UTC+2 (0 m)



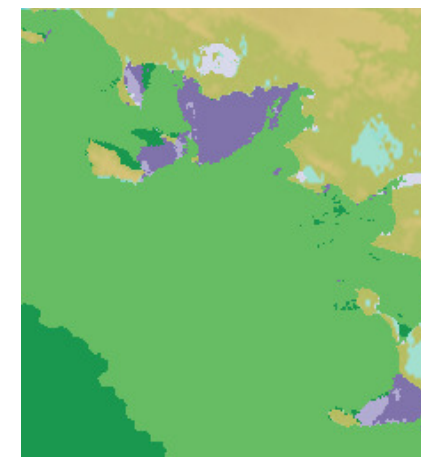
27/10/2022 00:00:00 UTC+2 (0 m)



27/10/2022 06:00:00 UTC+2 (0 m)



27/10/2022 12:00:00 UTC+2 (0 m)



27/10/2022 18:00:00 UTC+2 (0 m)

Unité s



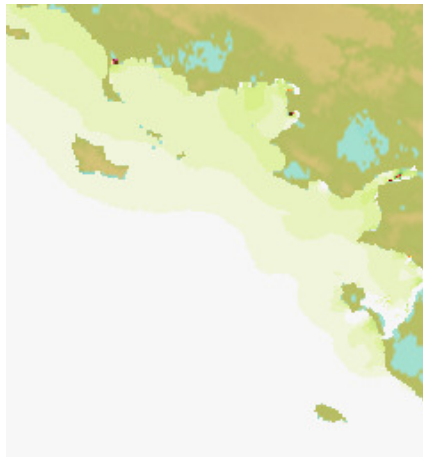
2.0      8.0      13.0      18.0      24.0

Informations sur les modèles utilisés :

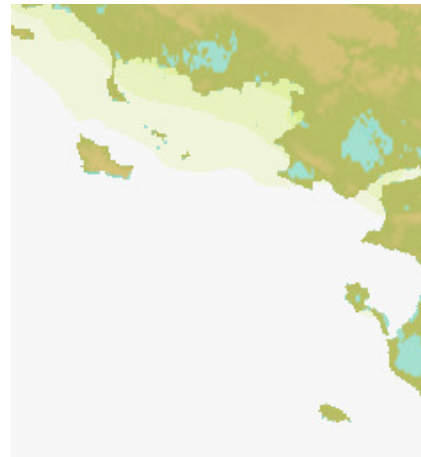
"VAGUES\_WW3\_R1132\_LOIRE-200M"(MAJ: 20221026 00:00:00) - source : Shom et Météo France



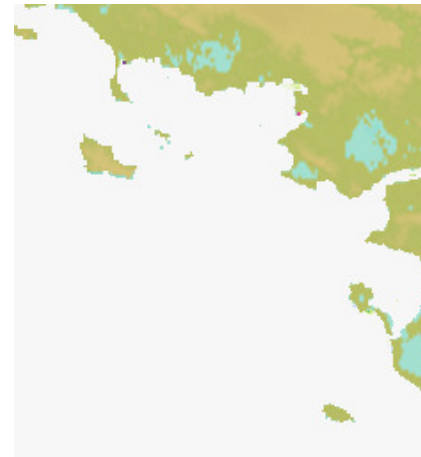
## Surcote



26/10/2022 00:00:00 UTC+2 (0 m)



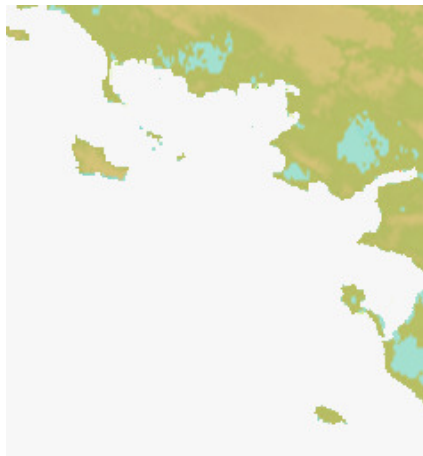
26/10/2022 06:00:00 UTC+2 (0 m)



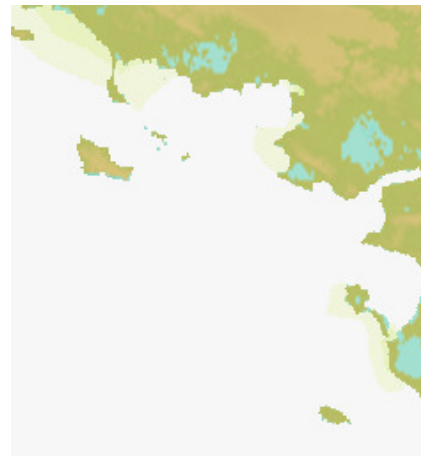
26/10/2022 12:00:00 UTC+2 (0 m)



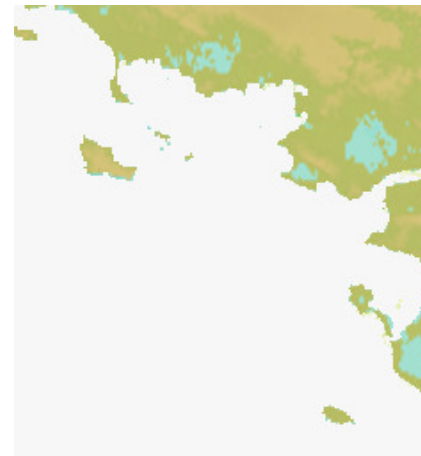
26/10/2022 18:00:00 UTC+2 (0 m)



27/10/2022 00:00:00 UTC+2 (0 m)



27/10/2022 06:00:00 UTC+2 (0 m)

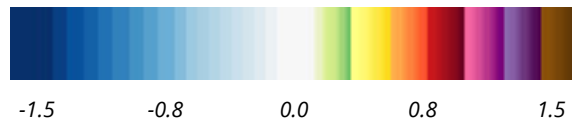


27/10/2022 12:00:00 UTC+2 (0 m)



27/10/2022 18:00:00 UTC+2 (0 m)

Unité m



Informations sur les modèles utilisés :

"NIVEAUX\_HYCOM2D\_R1000\_ATL-CG"(MAJ: 2022-10-26 00:00:00) - source : Shom et Météo France

## Hoëdic (HOEDIC) France

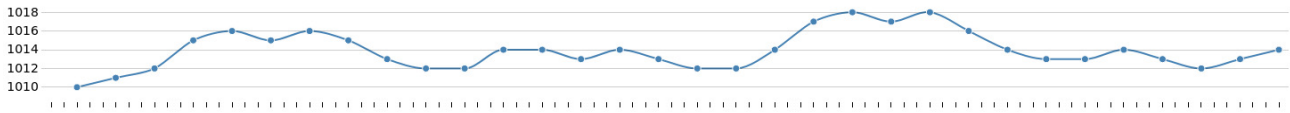
### Océanogramme (Prévisions sur 4 jours)

Hoëdic (47.3506° ; -2.8734°)

UTC+2

Mercredi 26 Octobre								Jeudi 27 Octobre								Vendredi 28 Octobre								Samedi 29 Octobre							
☀ 08:47 -- 19:03								☀ 08:48 -- 19:01								☀ 08:50 -- 18:59								☀ 08:51 -- 18:58							
≈ 16.3° 34.5 Psu								≈ 16.5° 34.3 Psu								≈ 16.5° 34.4 Psu								≈ 16.6° 34.5 Psu							
Coeff. 97 98								Coeff. 98 97								Coeff. 94 90								Coeff. 85 80							
02h	05h	08h	11h	14h	17h	20h	23h	02h	05h	08h	11h	14h	17h	20h	23h	02h	05h	08h	11h	14h	17h	20h	23h	02h	05h	08h	11h	14h	17h	20h	23h

#### Pression atmosphérique (hPa)



#### Vent



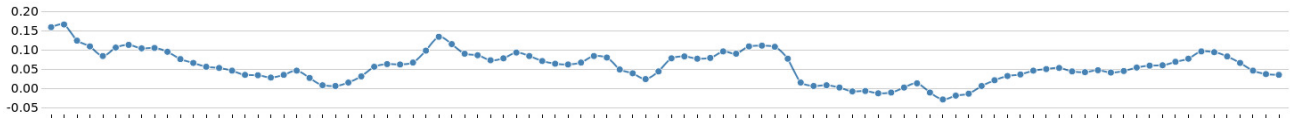
#### Vagues (mer totale)



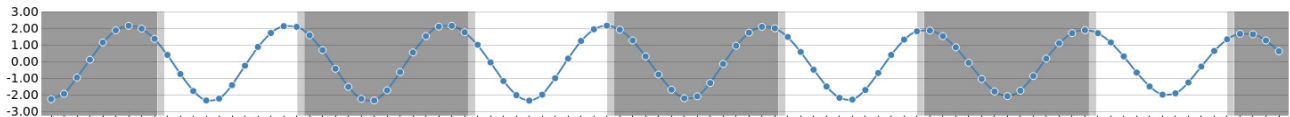
#### Courant de surface



#### Surcote météorologique (m)



#### Hauteur d'eau par rapport au niveau moyen (m)



#### Information sur les modèles utilisés

"Meteo" (47.3506 -2.8734) : "Modèle ARPEGE" (MAJ : 2022-10-26 00:00:00) - source : CEPMMT et Météo-France  
 "Vagues" (47.3506 -2.8734) : "Modèle WW3" (MAJ : 20221026 00:00:00) - source : Shom et Météo France  
 "Niveaux" (47.3506 -2.8734) : "Modèle HYCOM2D" (MAJ : 2022-10-26 00:00:00) - source : Shom et Météo France  
 "Hydrodyn-surf" (47.3676 -2.8767) : "Modèle HYCOM3D-SURF" (MAJ : 2022-10-26 00:00:00) - source : Shom  
 "Hydrodyn-mj" (47.3676 -2.8767) : "Modèle HYCOM3D-MJ" (MAJ : 2022-10-26 00:00:00) - source : Shom  
 "Ephémérides" (47.3506 -2.8734) - <http://vo.imcce.fr> - source : IMCCE

## Hoedic (HOEDIC) France

### HORAIRE DES MARÉES

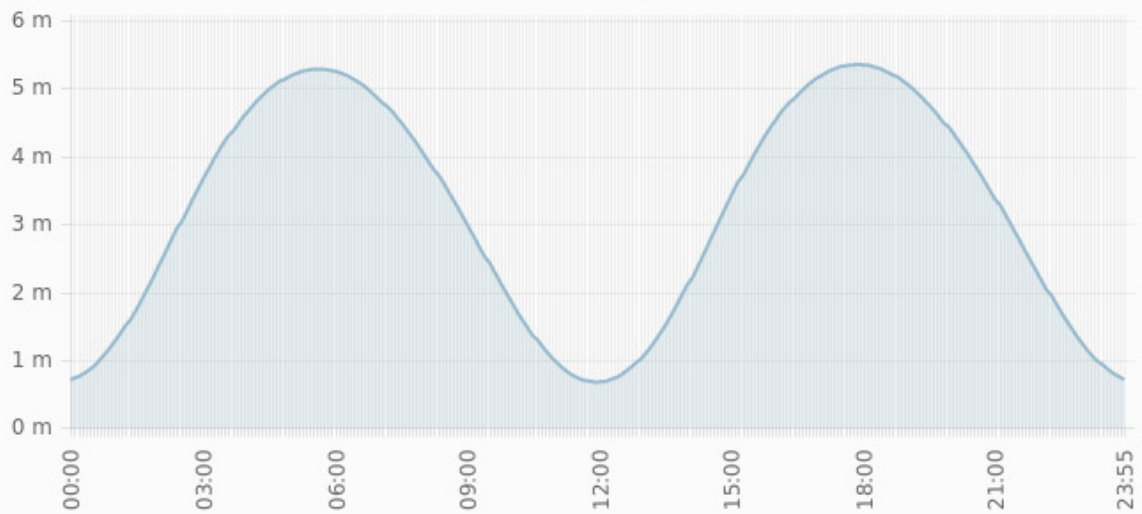
#### Hoedic

Système horaire : Heure légale



Mercredi 26 octobre 2022

	Heure	Hauteur	Coeff.
PM	05:37	5.28	97
BM	11:56	0.67	---
PM	17:51	5.35	98



Jours suivants

27/10/2022				28/10/2022			29/10/2022				
	Heure	Hauteur	Coeff.		Heure	Hauteur	Coeff.		Heure	Hauteur	Coeff.
BM	00:17	0.66	---	BM	00:56	0.76	---	BM	01:39	0.97	---
PM	06:12	5.30	98	PM	06:49	5.21	94	PM	07:29	5.01	85
BM	12:35	0.66	---	BM	13:16	0.77	---	BM	14:03	0.98	---
PM	18:27	5.27	97	PM	19:05	5.08	90	PM	19:48	4.78	80

30/10/2022				31/10/2022			01/11/2022				
	Heure	Hauteur	Coeff.		Heure	Hauteur	Coeff.		Heure	Hauteur	Coeff.
BM	02:27	1.28	---	BM	02:22	1.61	---	BM	03:29	1.91	---
PM	07:18	4.74	73	PM	08:23	4.45	59	PM	10:06	4.26	47
BM	13:55	1.27	---	BM	14:56	1.58	---	BM	16:09	1.80	---
PM	19:41	4.41	66	PM	21:08	4.08	52	PM	23:24	4.01	45

[Tous les horaires de marées en France et dans le monde](#)

Pour vos activités en mer, découvrez l'Espace de Diffusion du Shom



# Prévisions océanographiques côtières

Avec le soutien financier de



UNION EUROPÉENNE  
UNANIEZH EUROPA



L'Europe s'engage  
en Bretagne / Avec le Fonds européen  
de développement régional



Brest  
MÉTROPOLE



Et en partenariat scientifique avec



adresse postale

13 rue du Chatellier - CS 92803  
29 228 BREST CEDEX 2 - France

renseignements

+33 (0) 2 56 312 312

Internet

[www.shom.fr](http://www.shom.fr) | [data.shom.fr](http://data.shom.fr) | [diffusion.shom.fr](http://diffusion.shom.fr)

