

## **Offshore Special Regulations – 3.11 Sheet Winches and 3.08 Hatches & Companionways**

In response to a request for interpretation regarding OSR 3.11 and 3.08, the Chair of the Special Regulations Sub-committee, in consultation with the Chairman of the Oceanic and Offshore Committee, submits the following in accordance with World Sailing Regulation 30.3:

### **OSR 3.11 Sheet Winches**

Sheet winches should be installed in a way that an operator does not need to be significantly below deck.

Interpretations related to the questions follow:

#### *1 a: How should the deck be defined?*

There is no definition of “deck” in the OSR, ERS, or RRS. For the purposes of this request, “deck” should be interpreted as the upper, predominantly horizontal, or near horizontal, structural surface of the boat.

#### *1 b: How should the sheer line be located?*

OSR, and RRS do not provide a definition of “sheer line”. The ERS definition of sheerline is the line formed by the intersection of the top of the deck and the outside of the hull shell, each extended as necessary. General nautical terms define the sheer line as the joint between the hull and deck, with the deck being the upper structural surface.

#### *2: How should the deck be understood re: ISO 8666 or IMO convention?*

OSR is silent regarding which definition is specifically applied.

#### *3: Does the attached diagram comply with OSR 3.11? (see Figure 1)*

In the context of this drawing, and based on the information provided, no.

### **OSR 3.08 Hatches & Companionways**

#### *4. What differentiates a hatch from a companionway hatch?*

A hatch shall comply with OSR 3.08.1 through 3.08.3. A companionway hatch shall comply with OSR 3.08.4 through 3.08.7. Furthermore, the primary purpose of a companionway hatch shall be to allow access for the crew between the interior and the exterior of the boat.

#### *5 a. Is it possible to designate only one (of several) openings to the interior as the Companionway hatch?*

A companionway hatch is a primary access between the exterior and the interior of the yacht for the crew. The designation of a companionway hatch is based on functionality, rather than declaration.

#### *5 b: Do each of the 4 dry accesses constitute a companionway hatch? (see Figure 1)*

In the context of this drawing, and based on the information provided, no. Whilst each of the 4 dry accesses is considered a hatch, only those providing primary crew access between the interior and the exterior may be considered as a companionway hatch. All others are not.

Interpretation 01-2022v2  
Offshore Special Regulations

Effective date: 23/02/2022, ERS sheerline corrected 04/03/2022

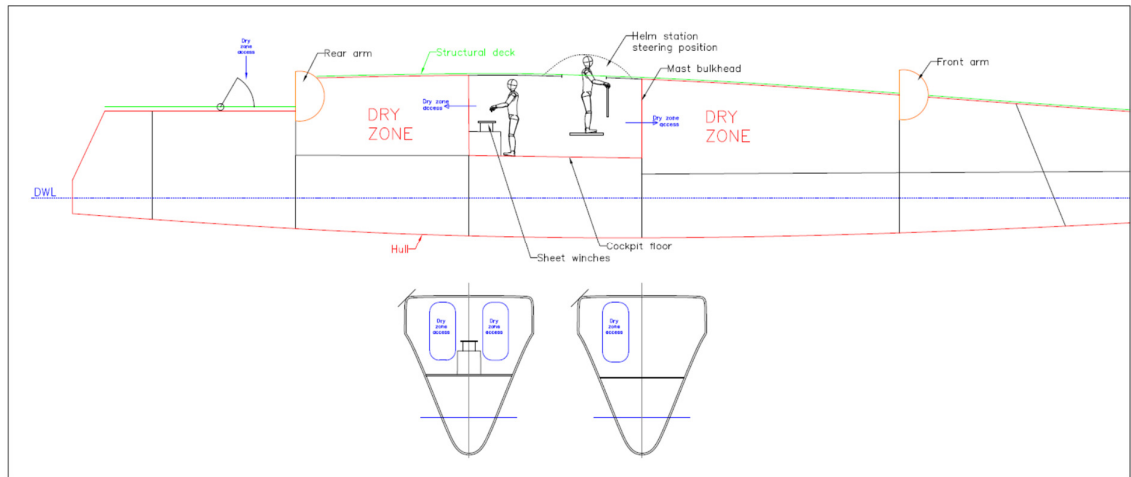


Figure 1

END.

-----