

F-27 - 3300# + 510# CW
for MORRELLI DESIGN

20 Nov 1992

HYDROSTATICS 1

UPRIGHT MEASUREMENT TRIM

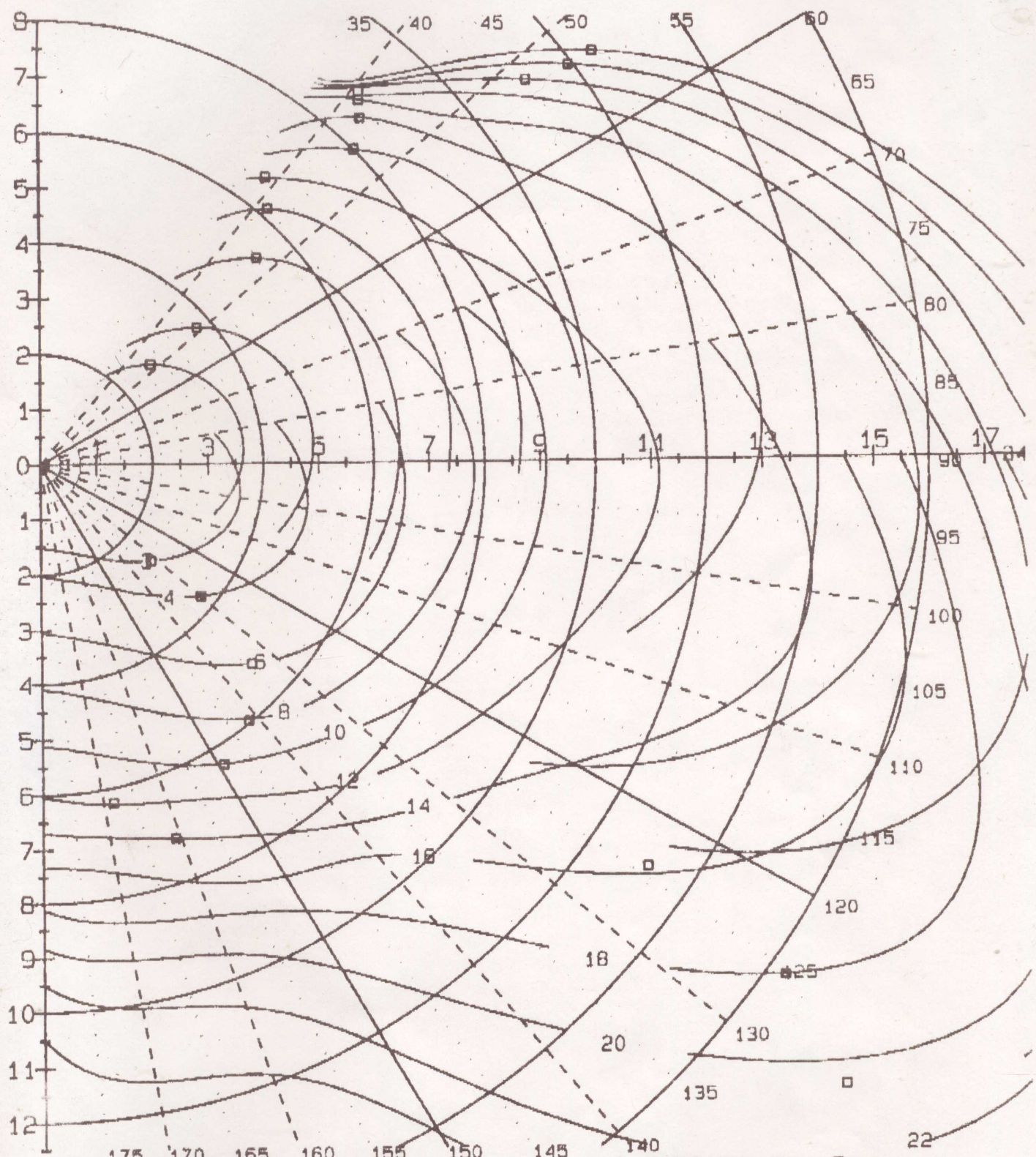
DISPLACEMENT..	3300.0	WATER DENSITY.	64.00	FGO.....	.465
LONG. CG.....	0.000	LWL.....	26.045	FF.....	2.553
VERT. CG.....	-1.300	MTI.....	562.880	FA.....	2.736
VERT. CB.....	.378	PPI.....	409.004	LBG.....	26.910
METACENTER....	-27.620	WETTED SURF...	140.859	TOTAL SURF....	721.541
LONG. CF.....	.110	RM/DEG.....	1525.028	LCG TOT. SURF.	1.068
VERT. CF.....	-.162	MAX. DRAFT....	5.087	VCG TOT. SURF.	-1.210

UPRIGHT SAILING TRIM

DISPLACEMENT..	3810.0	WATER DENSITY.	64.00	FF.....	2.618
LONG. CG.....	-.669	LWL.....	27.005	FA.....	2.488
VERT. CG.....	-1.594	MTI.....	654.429	CREW WT.....	510.000
VERT. CB.....	.319	PPI.....	448.509	GEAR WT.....	0.000
METACENTER....	-27.040	WETTED SURF...	153.091	SAILING LEN....	28.327
LONG. CF.....	-.468	RM/DEG.....	1707.845	RATED BEAM....	3.869
VERT. CF.....	-.243	MAX. DRAFT....	5.163	EFF. B/Tc.....	2.523
AMAX.....	3.438	EFF. DRAFT....	4.974	SUNK LENGTH...	30.833
SA / (DSPL) ^2/3	30.223	SA / WS	3.010	DSPL/LSM	77.731
RATED LENGTH..	27.970	AWP / (DSPL) ^2/3	5.516	100* VOL/LSM^3	.272

SAILING TRIM WITH HEEL

HEEL ANGLE	DWL @ FF	DWL @ FA	RTNG ARM	LONG C.B.	WET SURF.	SAILING LEN.	EFF. B/Tc	PRIS COEFF	AWP	LWL
0.0	.552	-.038	-0.000	-.63	153.09	28.33	2.52	.641	84.10	27.005
2.0	.439	.005	.831	-.81	147.24	28.41	2.52	.641	84.10	27.005
5.0			1.524		152.60	28.32	2.52	.617	81.42	27.059
7.5			2.188		156.34	28.20	2.52	.601	82.95	26.999
10.0	-.395	.105	2.903	-1.45	161.58	28.10	2.52	.589	84.62	26.939
12.5			3.807		171.25	27.71	2.52	.594	89.02	26.610
15.0			4.749		177.60	27.59	2.52	.615	88.16	25.982
17.5			5.405		184.31	27.62	2.52	.641	83.23	25.392
20.0			5.833		189.42	27.59	2.52	.626	75.33	25.117
22.5			6.044		191.90	27.44	2.52	.606	70.06	25.280
25.0	-2.960	.305	6.255	-3.84	194.38	27.28	2.52	.587	64.79	25.444
27.5			6.291		195.64	26.82	2.52	.584	58.66	24.866
30.0			6.327		196.90	26.36	2.52	.582	52.53	24.288
32.5			6.241		196.51	26.03	2.52	.597	48.07	23.850
35.0			6.155		196.12	25.71	2.52	.612	43.61	23.412
40.0	-6.023	.209	5.853	-3.99	195.72	25.12	2.52	.612	43.61	23.412
60.0	-9.018	-.269	3.934	-3.84	194.31					
90.0	-11.481	-1.054	2.035	-3.75	187.60					
120.0	-10.889	-1.652	-3.874	-3.77	190.49					
50.0	-6.857	-2.672	-6.620	-2.46	187.98					
70.0	-3.865	-2.093	-6.985	-1.34	218.35					



Copyright 25 Nov 1992 by Velocity - Peter Schwenn, Prop.

10

F-27 - 3300#+510# heelM13
for MORRELLI DESIGN

25 Nov 1992

MASTER FILE

MASTER FILE: 339M06

MORRELLI DESIGN
177 RIVERSIDE
NEWPORT BEACH
CA 92663
CUSTOMER CODE: D

FILE DATE: 25 Nov 1992
HOME: FAX-731-5417
WORK: 714-731-6399
DIG FILE: 0103066C
SERVICE CODE: GM3FY

BOAT NAME: F-27
MODIFIER: 3300#+510# heelim =3

DESIGNER:
STOCK MODEL: RACING/CRUISING TRI

2. SPAR INFO

DT	DTT	DL	DLT	TL	HBIS	HBI	SFJ
.148	.148	.229	.229	0	4.125	3.789	0
DTY	DTTY	DLY	DLTY	TLY	HBIYS		
0	0	0	0	0	0		

3. APPENDAGES INFO

TK	HK	CRK	CTK	TRK	TTK	SK	XTEK	CAK	LCBK
4.875	3.916	1.875	1.875	.2	.2	10	-.2	.661	.433
	HR	CRR	CTR	TRR	TTR	SR	XTER	CAR	LCBR
	3.09	1.59	1.125	.191	.135	0	-14.625	.682	.421
VOLK	WSK	CBXK	CBZK	VOLR	WSR	CBXR	CBZR	ECMA	XTEC
.97	14.685	1.209	2.917	.471	8.389	-14.082	1.37	0	0

4. PROP INSTALLATION INFO

TYPE	PSA	PSL	PSD	SHL	SHD	PHL	PHD	PRD	PIPA
4	0	0	0	0	0	0	0	0	0

5. SAIL INFO

SPL	SMW	SL	I	J	LP	P	E	BAD	RGF
10.31	18.558	36	32.19	10.31	14.81	32.9	12.56	3.375	1.09
PY	EY	YRGF	BADY	EB	YSF	YSMG	YSD	ISPIN	
0	0	0	0	0	0	0	0	33	
IGENK	GENKLP	GENKPL	GENKMW	GenksA	SpinSA	EffWdrd	ActWdrd	TriWdrd	
0	0	0	0	0	313.333	460.786	517.091	372.551	

6. FLOTATION INFO

PGO	LBG	FFS	FAS	FF	FA	RMC	BDK	HEELIM	WATER
.465	26.91	3.17	2.45	2.553	2.736	1257.9	13.67	13	64
LJPL	LCG	VCG	CW	XCW	ZCW	GW	XGW	YGW	ZGW
3300	0	0	0	0	0	0	0	0	0

Copyright 25 Nov 1992 By Velocity 5 - Peter Schwenn, Prop.

F-27 - 3300#+510# heelM13
for MORRELLI DESIGN

25 Nov 1992

PERFORMANCE Pg 1

TWA AWS AWA VB VMG HL LWY FLT RF
kts kts kts kts $\frac{1}{2} > 1$ hgt

----- 3.0 knots True Wind Speed -----

36.0	4.8	20.3	1.994	1.613	.1	5.03	1.00	1.00
44.0	5.1	24.1	2.483	1.786	.1	3.79	1.00	1.00
47.6	5.3	25.6	2.677	1.804	.2	3.42	1.00	1.00
52.0	5.4	27.3	2.889	1.779	.2	3.06	1.00	1.00
60.0	5.4	30.1	3.220	1.610	.2	2.56	1.00	1.00
70.0	5.4	33.6	3.516	1.202	.2	2.11	1.00	1.00
80.0	5.2	37.5	3.650	.634	.2	1.78	1.00	1.00
90.0	4.7	42.1	3.615	0.000	.1	1.52	1.00	1.00

----- Genoa / Spinnaker v -----

94.6		48.9	3.603	-.932	.1	1.25	1.00	1.00
105.0	4.1	61.2	3.151	-1.576	.1	.90	1.00	1.00
120.0	3.1	77.9	2.635	-1.761	0.0	.59	1.00	1.00
131.9	2.4	83.4	2.502	-1.769	0.0	.51	1.00	1.00
135.0	2.2	115.7	1.948	-1.687	0.0	.20	1.00	1.00
150.0	1.7	149.1	1.638	-1.583	0.0	.12	1.00	1.00
165.0	1.5	179.9	1.512	-1.512	0.0	.06	1.00	1.00
180.0	1.6							

----- Handicaps: -----
 Optimum Tack: 1995.7 Gybe: 2044.4 60deg: 1117.8 -100: 998.1 135: 1438.9
 Linear-random: 1313.5 Circ: 1389.0 Olymp: 1859.3 W/L: 2020.1 ACC: 1806.7
 BELL Versions: 1384.6 : 1436.9 : 1955.2 : 2147.1 GPH: 514.4

----- 4.0 knots True Wind Speed -----

36.0	6.4	20.3	2.668	2.158	.2	5.01	1.00	1.00
44.0	6.9	24.0	3.369	2.423	.3	3.72	1.00	1.00
48.7	7.1	25.8	3.739	2.466	.3	3.23	1.00	1.00
52.0	7.2	26.9	3.965	2.441	.3	2.97	1.00	1.00
60.0	7.4	29.7	4.408	2.204	.3	2.50	1.00	1.00
70.0	7.3	33.3	4.761	1.629	.3	2.08	1.00	1.00
80.0	6.9	37.2	4.914	.853	.3	1.77	1.00	1.00
90.0	6.4	41.8	4.878	0.000	.2	1.51	1.00	1.00

----- Genoa / Spinnaker v -----

95.6		48.6	4.848	-1.255	.2	1.24	1.00	1.00
105.0	5.5	59.8	4.326	-2.163	.1	.89	1.00	1.00
120.0	4.2	73.1	3.727	-2.395	.1	.64	1.00	1.00
130.0	3.3	82.2	3.396	-2.402	0.0	.51	1.00	1.00
135.0	2.9	115.6	2.602	-2.254	0.0	.20	1.00	1.00
150.0	2.2	149.0	2.186	-2.111	0.0	.12	1.00	1.00
165.0	2.1	179.9	2.017	-2.017	0.0	.06	1.00	1.00
180.0	2.1							

----- Handicaps: -----
 Optimum Tack: 1459.8 Gybe: 1503.2 60deg: 816.7 -100: 741.1 135: 1059.9
 Linear-random: 986.9 Circ: 1056.1 Olymp: 1363.4 W/L: 1481.5 ACC: 1326.3
 BELL Versions: 1063.8 : 1108.3 : 1523.5 : 1693.9 GPH: 514.4

12

F-27 - 3300#+510# heelM13
for MORRELLI DESIGN

25 Nov 1992

PERFORMANCE Pg2

TWA AWS AWA VB VMG HL LWY FLT RF
kts kts kts kts $\frac{1}{2}>1$ hgt

----- 6.0 knots True Wind Speed -----

	36.0	9.8	20.2	4.139	3.348	.5	4.80	1.00	1.00
	44.0	10.4	23.9	5.123	3.685	.6	3.66	1.00	1.00
OPT Tack	46.5	10.6	24.9	5.374	3.697	.7	3.43	1.00	1.00
	52.0	10.7	27.2	5.804	3.573	.7	3.04	1.00	1.00
	60.0	10.7	30.7	6.180	3.090	.7	2.65	1.00	1.00
	70.0	10.3	35.3	6.415	2.194	.6	2.28	1.00	1.00
	80.0	9.7	40.1	6.492	1.127	.5	1.95	1.00	1.00
	87.9								
				^ Genoa	/ Spinnaker	v			
	90.0	9.0	44.9	6.531	0.000	.5	1.68	1.00	1.00
	105.0	7.7	52.5	6.516	-1.687	.4	1.36	1.00	1.00
	120.0	6.1	62.7	6.104	-3.052	.3	.91	1.00	1.00
OPT Gybe	134.0	4.5	79.8	5.236	-3.637	.1	.53	1.00	1.00
	135.0	4.4	81.5	5.155	-3.645	.1	.51	1.00	1.00
	150.0	3.3	114.2	3.999	-3.463	0.0	.20	1.00	1.00
	165.0	3.1	148.8	3.307	-3.194	0.0	.11	1.00	1.00
	180.0	3.1	179.9	3.039	-3.039	0.0	.06	1.00	1.00

----- Handicaps: ----- (seconds/mile)

Optimum Tack:	973.8	Gybe:	989.9	60deg:	582.5	-100:	552.0	135:	698.4
Linear-random:	698.4	Circ:	736.1	Olymp:	904.8	W/L:	981.8	ACC:	886.2
BELL Versions:	739.9		767.5		1028.9		1132.3	GPH:	514.4

----- 8.0 knots True Wind Speed -----

	36.0	13.0	20.3	5.459	4.416	1.0	4.87	1.00	1.00
OPT Tack	41.8	13.4	23.3	6.157	4.590	1.1	4.16	1.00	1.00
	44.0	13.5	24.4	6.331	4.554	1.1	3.98	1.00	1.00
	52.0	13.5	28.6	6.776	4.172	1.1	3.48	1.00	1.00
	60.0	13.2	32.7	7.090	3.545	1.1	3.06	1.00	1.00
	70.0	12.7	37.9	7.345	2.512	1.0	2.62	1.00	1.00
	79.4								
				^ Genoa	/ Spinnaker	v			
	80.0	12.0	43.3	7.468	1.297	1.0	2.21	1.00	1.00
	90.0	11.3	48.0	7.804	0.000	1.0	2.01	1.00	1.00
	105.0	9.6	57.5	7.550	-1.954	.7	1.50	1.00	1.00
	120.0	7.7	69.8	7.010	-3.505	.4	.98	1.00	1.00
	135.0	5.8	86.3	6.351	-4.491	.2	.52	1.00	1.00
OPT Gybe	141.5	5.1	96.5	5.961	-4.663	.1	.36	1.00	1.00
	150.0	4.5	114.5	5.305	-4.594	0.0	.20	1.00	1.00
	165.0	4.0	148.4	4.458	-4.306	0.0	.11	1.00	1.00
	180.0	4.1	179.9	4.103	-4.103	0.0	.06	1.00	1.00

----- Handicaps: ----- (seconds/mile)

Optimum Tack:	784.3	Gybe:	772.0	60deg:	507.8	-100:	471.5	135:	566.9
Linear-random:	573.9	Circ:	591.5	Olymp:	725.2	W/L:	778.1	ACC:	710.0
BELL Versions:	579.1		597.1		768.4		828.5	GPH:	514.4

13

F-27 - 3300#+510# heelM13
for MORRELLI DESIGN

25 Nov 1992

PERFORMANCE Pg3

TWA AWS AWA VB VMG HL LWY FLT RF
kts kts kts $\frac{1}{2}$ >1 hgt

----- 10.0 knots True Wind Speed -----

	36.0	15.8	20.4	6.355	5.141	1.9	5.33	1.00	1.00
OPT Tack	38.2	15.9	21.8	6.575	5.167	2.0	5.09	1.00	1.00
	44.0	16.1	25.2	7.056	5.076	2.2	4.54	1.00	1.00
	52.0	16.1	29.5	7.699	4.740	2.3	3.85	1.00	1.00
	60.0	16.0	33.6	8.283	4.141	2.2	3.28	1.00	1.00
	70.0	15.5	39.0	8.621	2.948	1.7	2.78	1.00	1.00

----- ^ Genoa / Spinnaker v -----

	77.2								
	80.0	14.7	44.3	8.899	1.545	2.2	2.43	1.00	1.00
	90.0	13.7	49.8	9.112	0.000	1.8	2.17	1.00	1.00
	105.0	11.7	59.8	8.852	-2.291	1.0	1.57	1.00	1.00
	120.0	9.4	73.0	8.155	-4.078	.5	1.02	1.00	1.00
	135.0	7.2	92.6	7.112	-5.029	.2	.54	1.00	1.00
OPT Gybe	149.2	5.8	115.8	6.348	-5.451	.1	.22	1.00	1.00
	150.0	5.7	117.4	6.299	-5.455	.1	.21	1.00	1.00
	165.0	5.1	148.7	5.527	-5.338	0.0	.11	1.00	1.00
	180.0	5.1	179.9	5.117	-5.117	0.0	.06	1.00	1.00

----- Handicaps: ----- (seconds/mile) -----

Optimum Tack:	696.8	Gybe:	660.4	60deg:	434.6	-100:	402.8	135:	506.2
Linear-random:	488.6	Circ:	500.6	Olymp:	640.3	W/L:	678.6	ACC:	621.8
BELL Versions:	482.0	:	496.6	:	625.5	:	659.6	GPH:	514.4

----- 12.0 knots True Wind Speed -----

	36.0	18.3	20.5	6.900	5.582	5.5	6.05	1.00	1.00
OPT Tack	45.0	18.8	26.0	8.013	5.665	6.4	4.79	1.00	1.00
	44.0	18.7	25.4	7.879	5.667	6.3	4.93	1.00	1.00
	52.0	18.9	29.9	8.695	5.353	6.5	4.11	1.00	1.00
	60.0	18.6	34.5	9.169	4.584	6.0	3.57	1.00	1.00
	70.0	17.9	40.1	9.601	3.284	4.7	3.00	1.00	1.00

----- ^ Genoa / Spinnaker v -----

	73.9								
	80.0	17.3	44.8	10.355	1.798	6.8	2.54	1.00	1.00
	90.0	16.5	49.2	11.134	0.000	6.2	2.11	1.00	1.00
	105.0	13.8	60.6	10.360	-2.681	1.6	1.60	1.00	1.00
	120.0	11.0	75.9	9.161	-4.581	.7	1.06	1.00	1.00
	135.0	8.7	95.1	8.129	-5.748	.3	.56	1.00	1.00
	150.0	7.1	121.3	6.986	-6.050	.1	.24	1.00	1.00
OPT Gybe	168.5	6.2	156.8	6.270	-6.143	0.0	.11	1.00	1.00
	165.0	6.3	149.9	6.377	-6.159	0.0	.13	1.00	1.00
	180.0	6.2	179.9	6.025	-6.025	0.0	.06	1.00	1.00

----- Handicaps: ----- (seconds/mile) -----

Optimum Tack:	635.5	Gybe:	586.0	60deg:	392.6	-100:	339.1	135:	442.9
Linear-random:	426.3	Circ:	439.4	Olymp:	576.1	W/L:	610.8	ACC:	556.0
BELL Versions:	414.9	:	431.6	:	573.2	:	570.4	GPH:	514.4

14

F-27 - 3300#+510# heelM13
for MORRELLI DESIGN

25 Nov 1992

PERFORMANCE Pg4

TWA * AWS AWA * VB VMG HL * LWY * FLT RF
kts kts kts kts $\frac{1}{2} > 1$ hgt

----- 14.0 knots True Wind Speed -----

	36.0	20.7	20.4	7.397	5.984	9.4	6.72	1.00	1.00
OPT Tack	42.9	21.2	24.8	8.494	6.223	10.3	5.43	1.00	1.00
	44.0	21.3	25.5	8.624	6.204	10.4	5.29	1.00	1.00
	52.0	21.3	30.3	9.374	5.771	10.4	4.47	1.00	1.00
	60.0	21.3	34.6	10.356	5.178	10.3	3.67	1.00	1.00
	70.0	21.3	38.8	11.884	4.065	10.3	2.79	1.00	1.00
	80.0	20.7	43.3	12.823	2.227	9.1	2.23	1.00	1.00

----- 85.8 ----- ^ Genoa / Spinnaker v -----

	90.0	19.4	48.0	13.361	0.000	9.7	1.85	.92	1.00
	105.0	17.1	55.6	13.870	-3.590	7.0	1.44	1.00	1.00
	120.0	13.0	74.6	11.011	-5.506	1.0	1.04	1.00	1.00
	135.0	10.2	97.5	9.032	-6.386	.4	.58	1.00	1.00
	150.0	8.5	123.2	7.797	-6.753	.1	.26	1.00	1.00
OPT Gybe	160.8	7.9	143.3	7.186	-6.785	.1	.18	1.00	1.00
	165.0	7.7	151.3	7.034	-6.794	.1	.15	1.00	1.00
	180.0	7.6	179.9	6.701	-6.701	0.0	.08	1.00	1.00

----- Handicaps: ----- (seconds/mile)

Optimum Tack:	578.5	Gybe:	530.6	60deg:	347.6	-100:	262.8	135:	398.6
Linear-random:	356.2	Circ:	372.6	Olymp:	522.7	W/L:	554.6	ACC:	499.3
BELL Versions:	354.9		371.1		499.6		490.9	GPH:	514.4

----- 16.0 knots True Wind Speed -----

	36.0	23.3	20.2	8.142	6.587	11.6	6.97	.99	1.00
OPT Tack	41.3	23.4	24.1	8.708	6.538	12.1	5.79	.92	1.00
	44.0	23.5	25.9	8.979	6.459	12.2	5.46	.92	1.00
	52.0	23.6	30.8	10.014	6.165	12.3	4.45	.92	1.00
	60.0	24.1	34.6	11.645	5.822	12.5	3.40	.94	.98
[NG: .041]	70.0	24.1	38.9	13.340	4.563	12.5	2.62	1.00	.96
	80.0	23.6	42.7	14.844	2.578	12.5	2.11	1.00	.98
	90.0	22.4	46.9	15.761	0.000	11.6	1.73	1.00	1.00

----- 98.3 ----- ^ Genoa / Spinnaker v -----

[NG: .014]	105.0	19.5	54.7	16.060	-4.157	9.7	1.31	.97	.97
	120.0	15.5	67.8	14.615	-7.307	2.7	.96	1.00	1.00
OPT Gybe	124.1	14.1	75.7	13.146	-7.377	1.3	.86	1.00	1.00
	135.0	11.6	98.2	10.163	-7.186	.5	.58	1.00	1.00
	150.0	9.8	124.3	8.680	-7.517	.2	.28	1.00	1.00
	165.0	9.0	152.0	7.795	-7.529	.1	.17	1.00	1.00
	180.0	9.0	179.9	7.338	-7.338	0.0	.09	1.00	1.00

----- Handicaps: ----- (seconds/mile)

Optimum Tack:	550.6	Gybe:	488.0	60deg:	309.2	-100:	225.6	135:	354.2
Linear-random:	315.9	Circ:	338.0	Olymp:	487.8	W/L:	519.3	ACC:	463.4
BELL Versions:	319.3		339.9		476.2		525.2	GPH:	514.4

15

F-27 - 3300#+510# heelM13
for MORRELLI DESIGN

25 Nov 1992

PERFORMANCE P05

TWA AWS AWA VB VMG HL LWY FLT RF
kts kts kts kts 1/2 > 1 hgt

----- 18.0 knots True Wind Speed -----

	36.0	25.3	20.8	8.166	6.607	12.2	6.59	.80	1.00
OPT Tack	40.7	25.6	24.2	8.831	6.699	12.3	5.69	.79	1.00
	44.0	25.6	26.5	9.217	6.630	12.3	5.27	.80	.99
	52.0	26.1	31.3	10.717	6.598	12.6	4.15	.89	.95
	60.0	26.5	35.4	12.330	6.165	12.5	3.19	.96	.92
	70.0	26.5	39.7	14.189	4.853	12.5	2.44	1.00	.91
	80.0	25.9	43.8	15.791	2.742	12.5	1.95	1.00	.92
	90.0	24.8	47.5	17.164	0.000	12.5	1.62	1.00	.95
	105.0	21.9	54.5	18.065	-4.676	10.4	1.22	1.00	1.00

----- 107.7 ----- ^ Genoa / Spinnaker v -----

	120.0	18.0	63.7	17.836	-8.918	7.7	.91	1.00	1.00
OPT Gybe	125.3	16.0	71.5	16.328	-9.425	3.0	.78	1.00	1.00
	135.0	13.0	93.9	12.478	-8.824	.7	.55	1.00	1.00
	150.0	11.3	125.6	9.430	-8.167	.2	.30	1.00	1.00
	165.0	10.3	152.4	8.611	-8.317	.1	.18	1.00	1.00
	180.0	10.3	179.9	8.123	-8.123	0.0	.10	1.00	1.00

----- Handicaps: ----- (seconds/mile) -----

Optimum Tack:	537.4	Gybe:	382.0	60deg:	292.0	-100:	208.6	135:	288.5
Linear-random:	276.6	Circ:	296.8	Olymp:	443.7	W/L:	459.7	ACC:	413.8
BELL Versions:	279.8		298.9		416.6		447.6	GPH:	514.4

----- 20.0 knots True Wind Speed -----

	36.0	27.4	21.2	8.343	6.749	12.3	6.46	.72	.98
OPT Tack	44.0	27.8	27.0	9.481	6.820	12.8	5.34	.82	.94
	52.0	28.4	32.0	11.152	6.867	12.5	3.98	.92	.89
	52.0	28.4	32.0	11.154	6.867	12.5	3.98	.92	.89
	60.0	28.8	36.1	12.954	6.477	12.5	3.03	.98	.86
	70.0	28.8	40.6	14.938	5.109	12.5	2.29	1.00	.86
	80.0	28.1	44.8	16.665	2.894	12.5	1.83	1.00	.87
	90.0	26.9	48.7	18.169	0.000	12.5	1.50	1.00	.90
[NG: .023]	105.0	25.3	51.2	21.769	-5.634	13.4	1.15	1.00	1.00

----- 114.3 ----- ^ Genoa / Spinnaker v -----

	120.0	20.0	63.0	19.977	-9.988	9.7	.86	1.00	.97
OPT Gybe	128.4	17.0	72.7	18.389	-11.420	4.3	.68	1.00	1.00
	135.0	14.5	89.1	15.133	-10.701	1.0	.53	1.00	1.00
	150.0	12.4	124.9	10.678	-9.247	.2	.29	1.00	1.00
	165.0	11.7	153.0	9.302	-8.985	.1	.19	1.00	1.00
	180.0	11.6	179.9	8.831	-8.831	.1	.10	1.00	1.00

----- Handicaps: ----- (seconds/mile) -----

Optimum Tack:	524.3	Gybe:	315.2	60deg:	277.9	-100:	195.9	135:	237.9
Linear-random:	248.5	Circ:	274.6	Olymp:	410.9	W/L:	419.7	ACC:	378.9
BELL Versions:	252.5		276.9		424.2		436.4	GPH:	514.4

16

F-27 - 3300#+510# heelM13
for MORRELLI DESIGN

25 Nov 1992

PERFORMANCE P06

TWA AWS AWA VB VMG HL LWY FLT RF
kts kts kts kts $\frac{1}{2}>1$ hgt

----- 22.0 knots True Wind Speed -----

	36.0	29.5	21.5	8.455	6.841	12.4	6.54	.74	.93
	44.0	29.9	27.5	9.627	6.925	12.5	5.31	.84	.88
	52.0	30.7	32.6	11.612	7.149	12.5	3.83	.93	.84
OPT Tack	53.3	30.8	33.3	11.926	7.134	12.5	3.65	.94	.83
	60.0	31.1	36.8	13.511	6.756	12.5	2.90	1.00	.81
	70.0	31.0	41.5	15.615	5.341	12.6	2.18	1.00	.81
	80.0	30.3	45.7	17.466	3.033	12.5	1.72	1.00	.83
	90.0	29.0	49.8	19.108	0.000	12.5	1.41	1.00	.86
[NG: .026]	105.0	26.1	55.5	21.198	-5.486	12.5	1.09	1.00	.93
	118.2			^ Genoa / Spinnaker v					
[NG: .021]	120.0	21.6	64.3	21.289	-10.645	9.8	.79	1.00	.92
OPT Gybe	131.5	17.6	75.0	20.129	-13.341	4.9	.59	1.00	1.00
	135.0	16.1	83.9	18.168	-12.847	1.5	.51	1.00	1.00
	150.0	13.3	122.9	12.359	-10.703	.3	.26	1.00	1.00
	165.0	12.9	153.0	10.244	-9.895	.1	.19	1.00	1.00
	180.0	13.0	179.9	9.505	-9.505	.1	.11	1.00	1.00

----- Handicaps: ----- (seconds/mile)

Optimum Tack:	504.6	Gybe:	269.8	60deg:	266.4	-100:	185.2	135:	198.2
Linear-random:	229.2	Circ:	253.5	Olymp:	381.2	W/L:	387.2	ACC:	349.5
BELL Versions:	229.1	:	253.6	:	389.6	:	394.6	GPH:	514.4

----- 24.0 knots True Wind Speed -----

	36.0	31.6	21.7	8.563	6.927	12.5	6.66	.75	.88
	44.0	32.0	27.9	9.822	7.065	12.5	5.30	.86	.84
	52.0	33.0	33.1	12.015	7.397	12.6	3.71	.95	.79
OPT Tack	53.5	33.1	34.0	12.416	7.378	12.6	3.49	.96	.79
	60.0	33.4	37.4	14.008	7.004	12.6	2.79	1.00	.77
	70.0	33.3	42.3	16.226	5.550	12.6	2.08	1.00	.77
	80.0	32.5	46.7	18.203	3.161	12.6	1.64	1.00	.79
	90.0	31.1	50.8	19.987	0.000	12.5	1.33	1.00	.82
[NG: .025]	105.0	28.0	56.6	22.298	-5.771	12.5	1.01	1.00	.89
	120.0	23.6	63.5	23.501	-11.750	11.6	.79	1.00	1.00
	118.2			^ Genoa / Spinnaker v					
OPT Gybe	132.7	18.8	74.2	22.506	-15.254	7.2	.56	1.00	1.00
	135.0	17.8	79.0	21.435	-15.157	4.3	.50	1.00	1.00
	150.0	14.2	120.7	14.133	-12.240	.3	.24	1.00	1.00
	165.0	13.7	152.3	11.552	-11.159	.2	.17	1.00	1.00
	180.0	14.0	179.9	10.484	-10.484	.1	.11	1.00	1.00

----- Handicaps: ----- (seconds/mile)

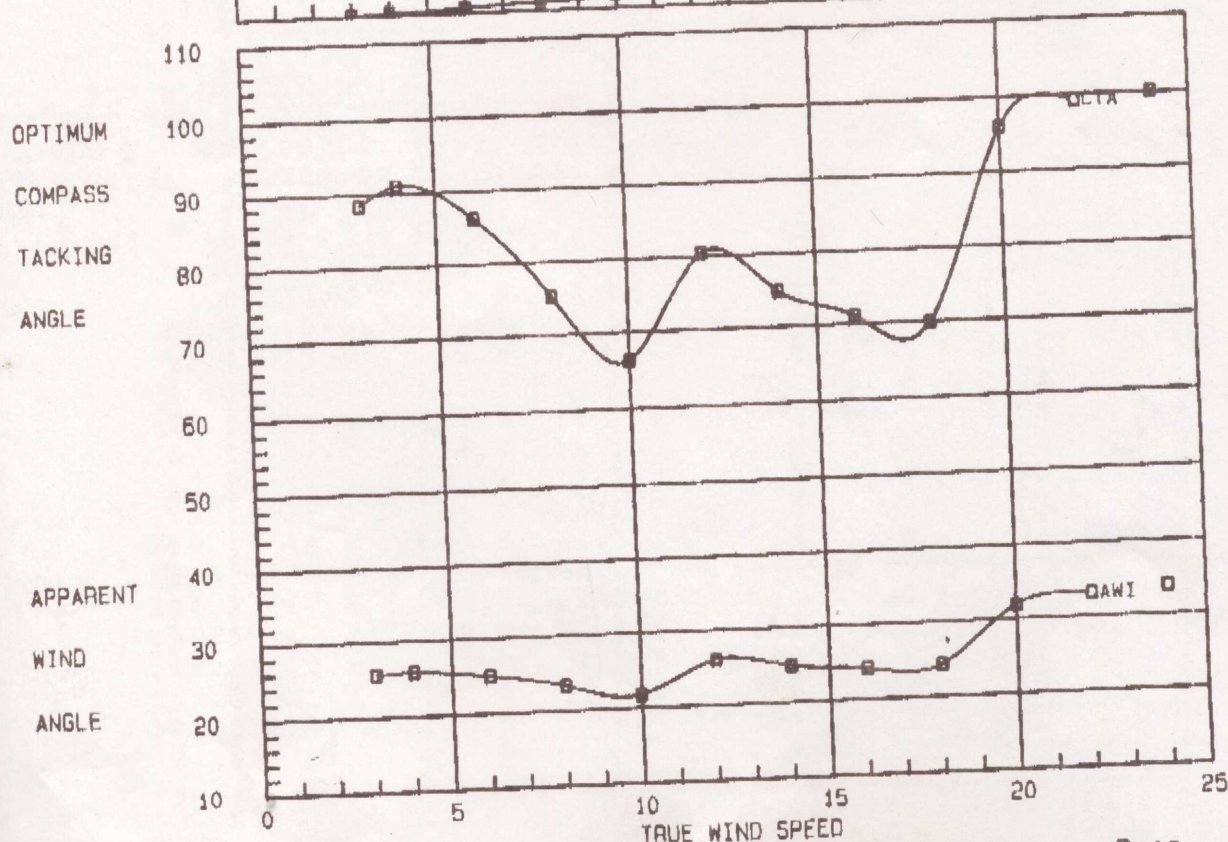
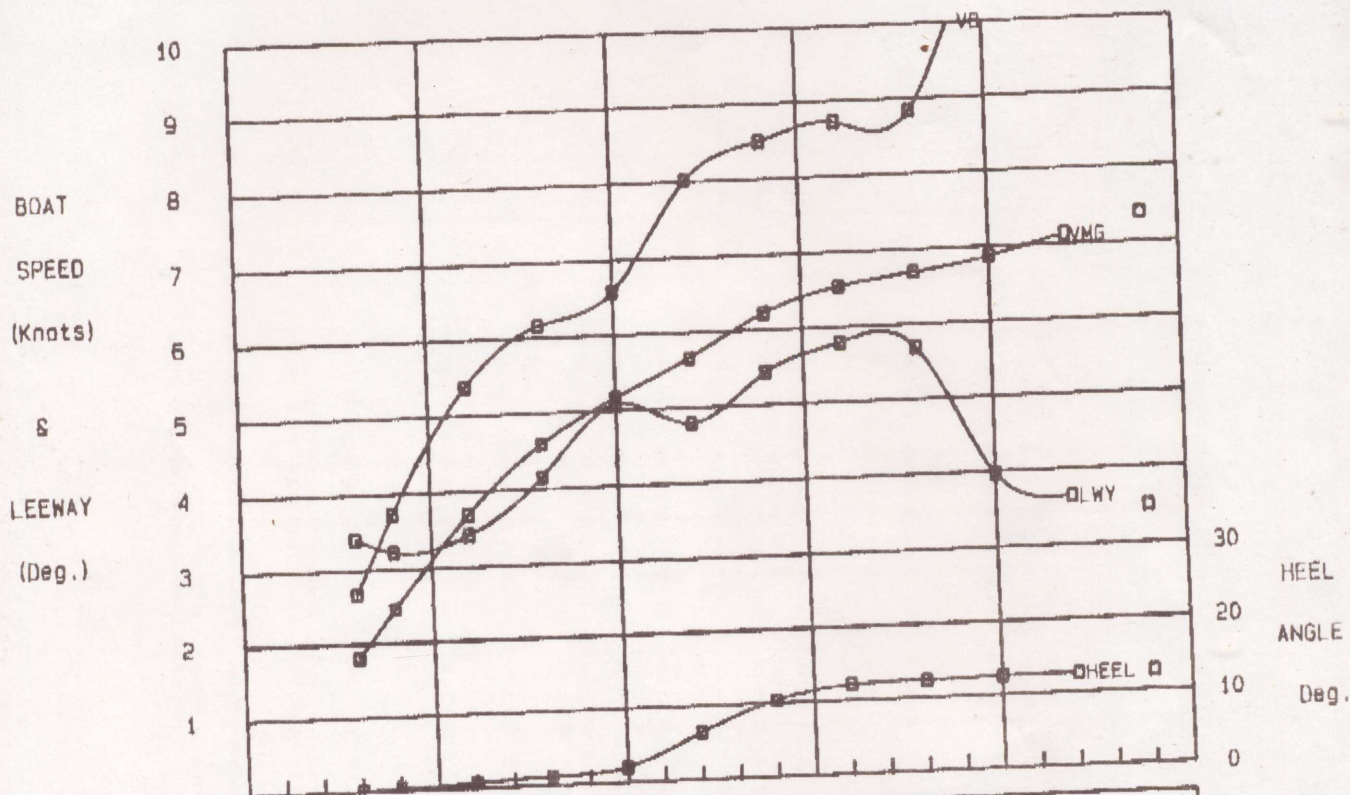
Optimum Tack:	487.9	Gybe:	236.0	60deg:	257.0	~100:	176.1	135:	167.9
Linear-random:	211.6	Circ:	235.9	Olymp:	357.8	W/L:	362.0	ACC:	326.4
BELL Versions:	210.9	:	235.6	:	359.9	:	363.2	GPH:	514.4

16

F-27 - 3300#+510# heelM13 for MORRELLI DESIGN

25 Nov 1992

UPWIND

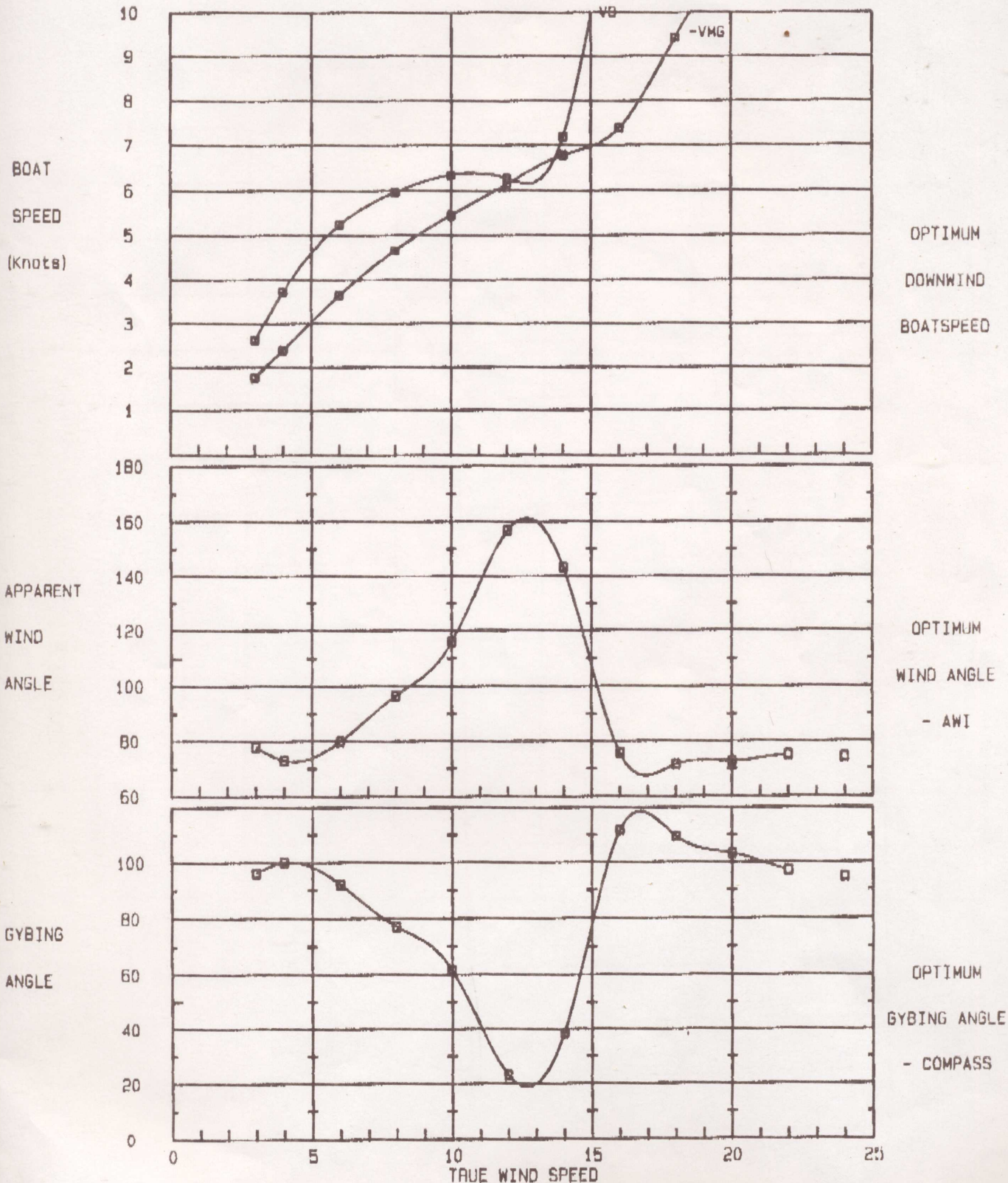


19

F-27 - 3300#+510# heelM13
for MORRELLI DESIGN

25 Nov 1992

DOWNWIND

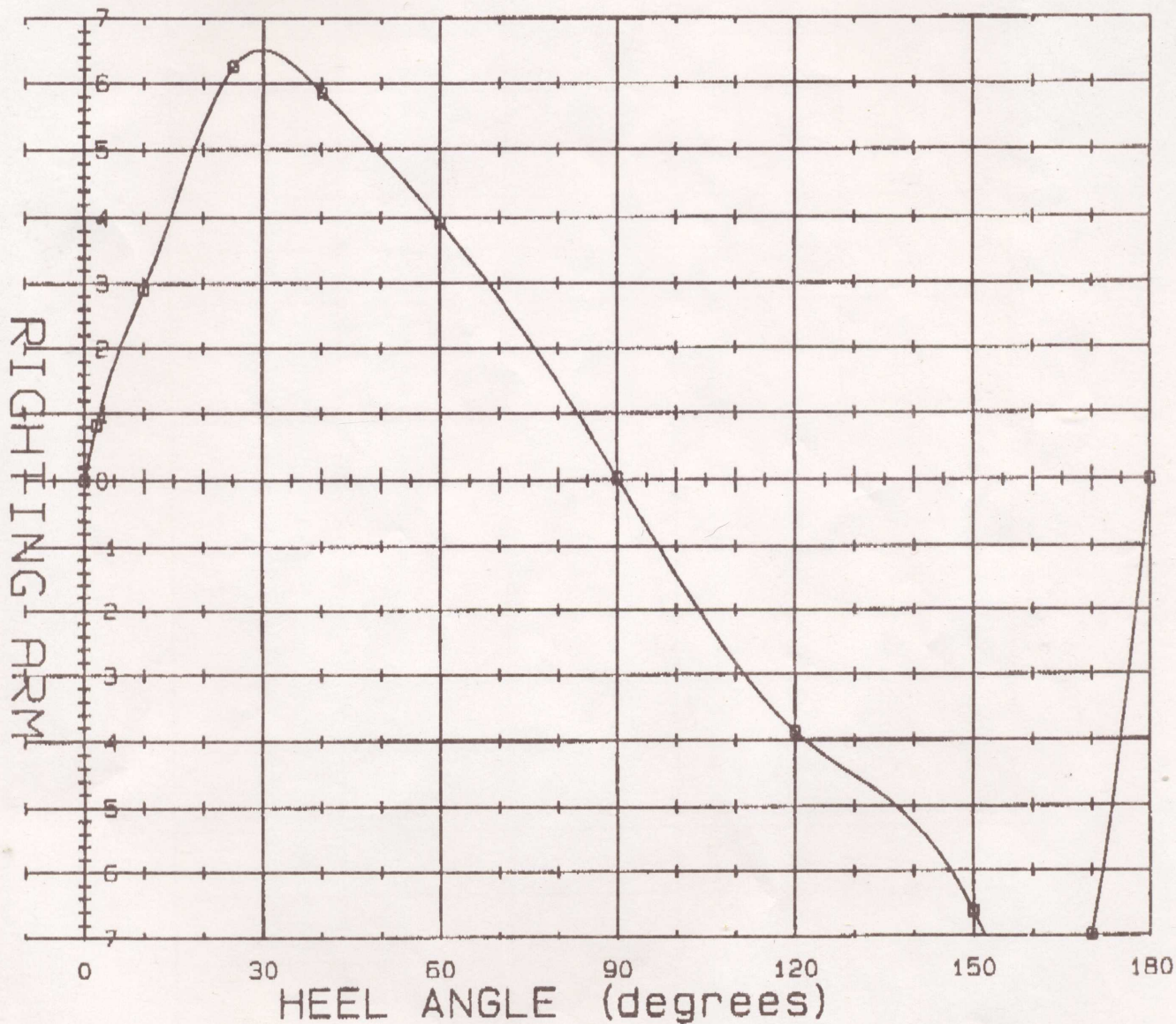


F-27 - 3300# + 510# cw
for MORRELLI DESIGN

20 Nov 1992

HYDROSTATICS 2

RIGHTING ARM vs. HEEL ANGLE



F-27 - 3300# + 510# cw
for MORRELLI DESIGN

20 Nov 1992

HYDROSTATICS 2

RIGHTING ARM vs. HEEL ANGLE

