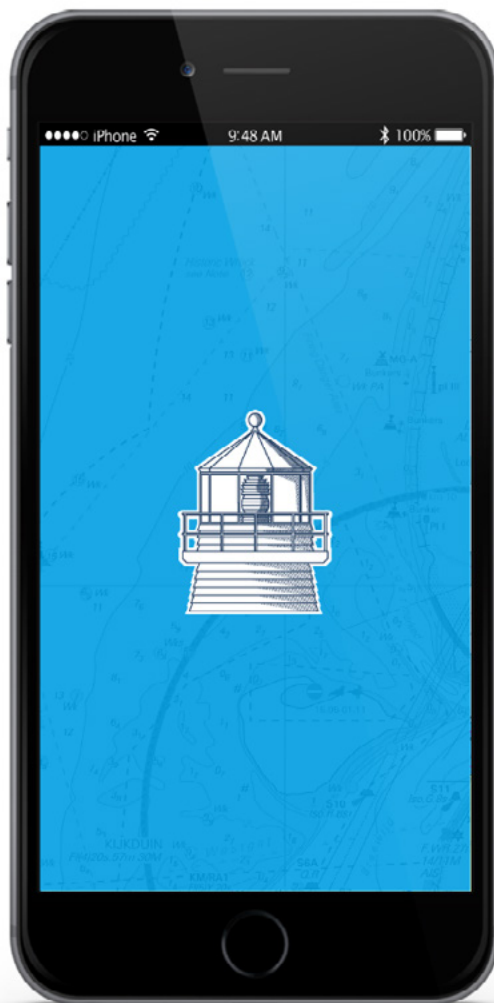


Instruction manual

nv charts App



NV Chart Group GmbH
Carlshöhe 75 • 24340 Eckernförde • +49 4351 860990
info@nvcharts.com

Table of contents

1. Introduction	04
2. Devices and operating systems	04
2.1 iOS Devices	04
2.2 OS X Devices	04
2.3 Android Devices	05
2.4 Windows Devices	05
3. Conditions and installation	05
4. First use of the app	05
4.1 Sign in	05
4.2 Create account	06
4.3 Create account later	07
4.4 Home screen	07
5. Overview of the features	08
6. Chart interactions	08
7. Weather	08
7.1 Tidal currents	09
7.2 Wind	09
7.3 Settings	09
8. Man overbord (MOB)	10
9. Ship's position and chart orientation	10
10. Dashboard	11
11. Routes	11
11.1 Display of route	11
11.2 Create new route	11
11.3 Edit route	12
11.3.1 Editing menu	13
11.3.2 Interaction with the route	13
11.4 Check route	13
11.5 Navigation along the route	14
12. Marker	14
12.1 Display of marker	14
12.2 Create new marker	15
12.3 Edit marker	15
12.3.1 Editing menu	15
12.3.2 Interactions with the marker	15
12.4 Navigation to the marker	16
12.5 Add photographs	16
12.6 Image gallery	16
13. Ruler	17

14. Anchor Alarm	17
15. Charts	18
15.1 Add charts	18
15.2 Buy offline charts	18
15.2.1 Digital subscription	19
15.2.2 Paper and Digital	19
15.3 My charts	19
15.3.1 Loading charts	19
15.3.2 Updating charts	20
15.4 Chart settings	20
16. Logbook	20
16.1 Create activity	21
16.2 Add photographs	21
16.3 Image gallery	21
17. On the location	22
17.1 Report information	22
17.2 Highlighted lighthouse display	22
17.3 Tidal information	22
17.4 Navigation to the location	23
18. Settings	23
18.1 Sail mode and App	23
18.2 Chart settings	25
18.3 GPS/AIS	26
18.4 Weather	27
18.5 Privacy	27
19. Feedback	27
20. Help	28
21. About	28
22. User profile	28
22.1 With user account	28
22.2 Without user account	28

1. Introduction

Dear NV customers,

this user manual is intended to give you a simple introduction to our new nv charts app and can be used both as a manual and as a reference book for to answer any questions that may arise.

All charts of the NV Verlag / nv charts can be downloaded in the nv charts app and used for offline navigation. The charts are available as a combination pack of paper and digital charts either in the NV Onlineshop or at various nautical chart dealers. In addition, they can be purchased in purely digital form directly via the nv charts app. The nv charts app is therefore the ideal software for navigation with the popular NV nautical charts. A clearly structured nautical app with intuitive operation and extensive tools for dynamic navigation, it is ideal for all activities on the water.

It is part of the concept of the nv charts app to constantly improve and further develop itself. Existing functions are continuously updated and new features are added for an even better use is made available. One of the many new features from now on, for example, is the use of the app without the need for maps. must be purchased in advance or demo cards must be downloaded in the app.

2. Devices and operating systems

The nv charts app is available for mobile devices as well as for desktop PCs or laptops. The use of GPS is recommended for optimal use. The following operating systems and versions for using the nv charts app are supported:

2.1 iOS Devices

from iOS 12

- iPhone 6 und iPhone 6 Plus
(nicht Vektorkarten geeignet)
- iPhone 6s und iPhone 6s Plus
(nicht Vektorkarten geeignet)
- iPhone 7 und iPhone 7 Plus
- iPhone 8 und iPhone 8 Plus
- iPhone X
- iPhone XS und iPhone XS Max
- iPhone XR

- iPad Air (nicht Vektorkarten geeignet)
- iPad Air 2
- iPad (2017 & 2018)
- iPad Mini 2
- iPad Mini 3
- iPad Mini 4
- iPad Pro (1. Generation)
- iPad Pro (2. Generation)
- iPad Pro (3. Generation)

2.2 OS X Devices

from Mojave 10.14

- MacBook ab Anfang 2015
- MacBook Pro ab Mitte 2012
- MacBook Air ab Mitte 2012

- Mac Mini ab Ende 2012

- iMac ab Ende 2012
- iMac Pro ab 2017

- Mac Pro ab Ende 2013

2.3 Android Devices

General system requirement:

- Android 7.0 or higher
- 4 GB RAM (DDR4)
- 500 MB disk space

2.4 Windows Devices

General system requirement:

- Windows 7 or higher
- 64 bit version
- 4 GB RAM (DDR4)
- 500 MB disk space

3. Conditions and installation

In order to use the nv charts app, you must first install it on the devices you want to use (maximum five). Make sure in advance that the app is compatible with your devices (see 2. Devices and operating systems).


Installation steps

1. Click on the following link or type the following lines directly into the address bar of your browser: <http://www.nvcharts.com/app/eu>
2. Click on „Get this app“.
3. Select from the four options the operating system of your device and click on the corresponding button.
4. **iOS:** Click on „Load“.

Android: Click on „Install“.

Windows: Click on „Save file“ and open the saved file with a double click.
Then follow the displayed instructions.

OS X: Follow the instructions shown.

Once you have completed the installation, you can click the app icon (double-click on the computer) to open the app  and start it.

4. First use of the app

4.1 Sign in

If you already have an nv charts app account, click on the „Login“ button (see Fig.1). Then enter your e-mail address and password in the fields provided and tick the box when you have read and accepted the Terms of Use and Privacy Policy. **!**



Only if you have read both the Terms of Use and the Privacy Statement you can use the nv charts app.

Then click on the „Login“ button and you can start using the app.

If you have forgotten your password, click on „Reset Password“ below the login button and you will be taken to a new page. Here you'll have to enter your e-mail address again and request a new password by clicking on the „Request“ button. You will then receive an e-mail with instructions on how to proceed to the e-mail address you entered previously.

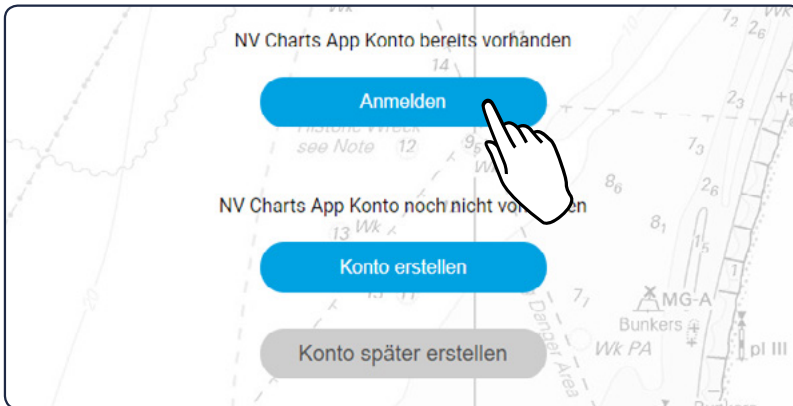


Fig.1
Sign in with existing account

4.2 Create account

If you do not yet have an nv charts App account, you can click on the button „Create account“, to create a new account. Then enter in the fields provided your e-mail address and choose a password, which will have to be repeated once again. Check the box when you have read and accepted the Terms of Use and Privacy Policy (see [Fig.2](#)) and click on the button „Create account“.

! Only if you have read both the Terms of Use and the Privacy Statement you can use the nv charts app.

You can now start using the app. At the same time, you will receive an e-mail with a confirmation link to the e-mail address you entered previously. Please confirm this link within seven days in order to continue to use the app to the full extent.

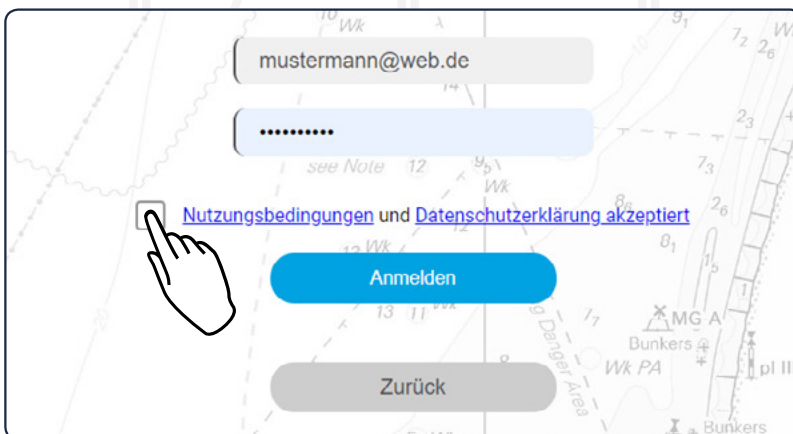


Fig.2
Accepting Terms of Use and Privacy Policy

4.3 Create account later

Click on the „Create account later“ button if you wish to use the nv charts app without an account for the time being. !

! If you use the „Create account later“ button to access the nv charts app, you can only use it to a limited extent. For example, navigation along a route or the in-app purchase of charts is not possible.

After clicking on the button you can start using the app.

If you are already in the app and now want to create an account, you can do so via the main menu and the „User profile“ tab at the bottom of the menu. Please read on under 22.2 Without user account.

Boat	
Boat name	ENTER_BOAT_NAME
Boat speed	10
Boat draft	1,4 m
Boat airdraft	8 m
App ▼	
Units ▼	

Fig.3
Entering informations about your boat

4.4 Home screen

The following figure shows the home screen of the nv charts app and describes which functions can be found.

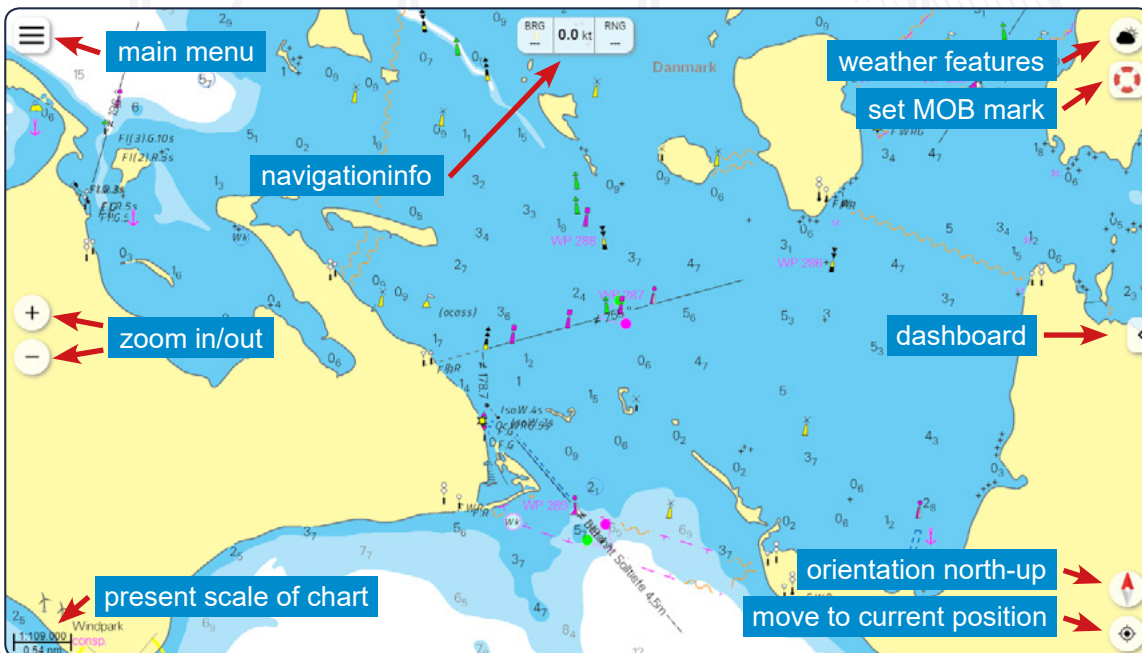


Fig.4
Home screen in navigation mode

5. Overview of the features

The main functions of the app are listed below. You will find a more detailed explanation of the individual functions in the further course of this operating manual. Please refer to the table of contents to find out exactly where you can find the corresponding explanations.


- Plan your route
- Check your route
- Navigation along a route
- Input of waypoints with coordinates
- Create marker
- Navigation to a marker
- Ruler
- Anchor alarm (also in standby mode)
- In-App purchase of charts
- Management of purchased charts
- Track recording with logbook entry
- Manual logbook entry
- Expert mode with extended displays
- Tidal current display in real time
- Wind display in real time
- Man overboard function
- Highlighted lighthouse display
- Tidal curve
- Information on each chart location
- Vector charts
- Chart adaptation to the ship's draught and height
- Error report & feedback function

6. Chart interactions

Aktion	Mobile device	Desktop-PC/Laptop
Close menu	<ul style="list-style-type: none"> • Single tap on the chart • Swipe the menu to the left 	<ul style="list-style-type: none"> • Single click on the chart
Zoom into the chart	<ul style="list-style-type: none"> • Drag the chart with two fingers • Double tap on the chart 	<ul style="list-style-type: none"> • Turn the mouse wheel up • Double click on the chart
Zoom out of the chart	<ul style="list-style-type: none"> • Pull the chart with two fingers 	<ul style="list-style-type: none"> • Turn the mouse wheel down
Open informations „On position“	<ul style="list-style-type: none"> • Long tap on the chart • Long tap on an object in the chart 	<ul style="list-style-type: none"> • Press and hold on the chart • Press and hold on an object in the chart
Move in the chart	<ul style="list-style-type: none"> • Tap, hold and move in the chart 	<ul style="list-style-type: none"> • Press, hold and move in the chart
Fast creation of a route/ marker/ruler	<ul style="list-style-type: none"> • Long tap on the chart and selecting the appropriate function 	<ul style="list-style-type: none"> • Press and hold on the chart and selecting the appropriate function


Tab.1
Chart interactions

7. Weather

To open the weather menu, click on the weather icon in the upper right corner .


To use the weather function, you will need a constant internet connection.

7.1 Tidal currents

By clicking on the flow symbol  the current flows in the area of the selected chart section are displayed. The arrows describe the current direction, the colour of the water and the displayed knots determine the current intensity.

You can also read the strength of the current in the scale on the left side of the screen.

7.2 Wind

Click on the wind symbol , to display the current wind data in the area of the selected map section. The arrows indicate the direction in which the wind blows, the colour of the water and the marks on the arrows determine the wind strength. You can also read the strength of the wind in the scale on the left side of the screen.

gepasst und entsprechend geändert.

Bft	Kn	m/sec	Bft	Kn	m/sec	Bft	Kn	m/sec
0	< 1	0 - 0,2	5	16 - 21	8,0 - 10,7	10	48 - 55	24,5 - 28,4
1	1 - 3	0,3 - 1,5	6	22 - 27	10,8 - 13,8	11	56 - 63	28,5 - 32,6
2	4 - 6	1,6 - 3,3	7	28 - 33	13,9 - 17,1	12	> 64	> 32,7
3	7 - 10	3,4 - 5,4	8	34 - 40	17,2 - 20,7			
4	11 - 15	5,5 - 7,9	9	41 - 47	20,8 - 24,4			

Tab.2
Wind speed



7.3 Settings


Using the menu at the top of the screen, you can select the exact day and time for the current/wind display. To do this, click on the arrow keys to the right and left of the current date display to jump back and forth step by step.

Alternatively, select the desired date directly from the list, which opens by clicking on the pop-up menu (see Fig.5).



Fig.5
Wind presentation
Opening the date list

By clicking on the play symbol  you can display currents and wind interactively and in real time. The interactive view can be ended by clicking on the stop symbol .

A click on the gearwheel  symbol opens an extended menu on the left side of the screen for both the current and the wind display.

Under „Area“ you can define in which area the current and wind data should be displayed. Let the settings „Load automatically“ so that the data is always displayed on the currently selected map section.

If the slider „Update automatically“ is active, the data will be continuously adjusted. and amended accordingly. !

! We recommend that you only set this function to inactive if you want to save power on the device or if your device is experiencing display problems.

If the slider is active with „Show colors“, the water is colored according to the intensity when the current / wind display is activated. Set this slider to inactive to display only the knot information on the map.

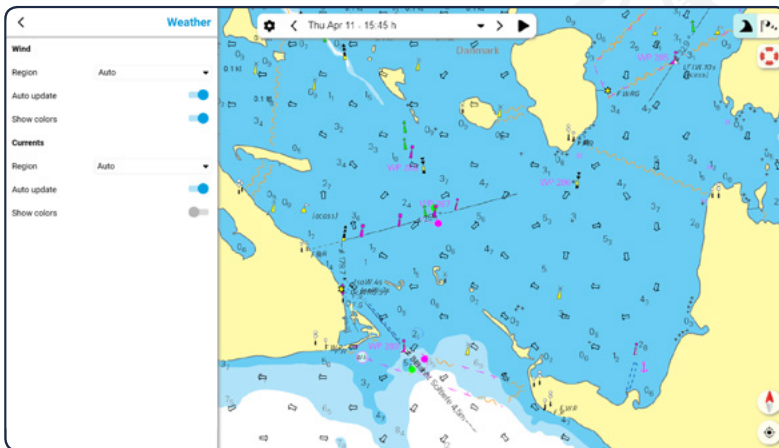



Fig.6
Menu wind / tidal currents
„Show colors“ deactivated

8. Man overboard (MOB)

If a person has gone overboard, you can use the MOB symbol  in the upper right corner of the home screen. At your current ship position a MOB marker appears automatically, which is also displayed to other users of the nv charts App so that they can help quickly if necessary.

In addition, the navigation to the MOB mark is started. If you are navigating to another position on the map, this navigation is automatically stopped.

If you have set the MOB mark unintentionally or if the person to be rescued is again to safety, you can delete the marker by pressing the button „Stop navigation“ and confirm the following question with „Yes“ (see [Fig.7](#)).

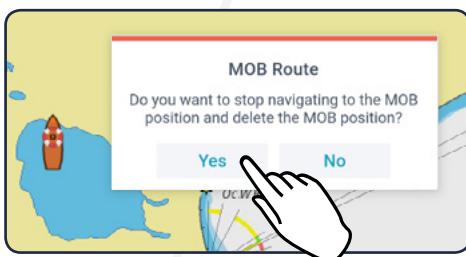




Fig.7
Stopping the MOB route

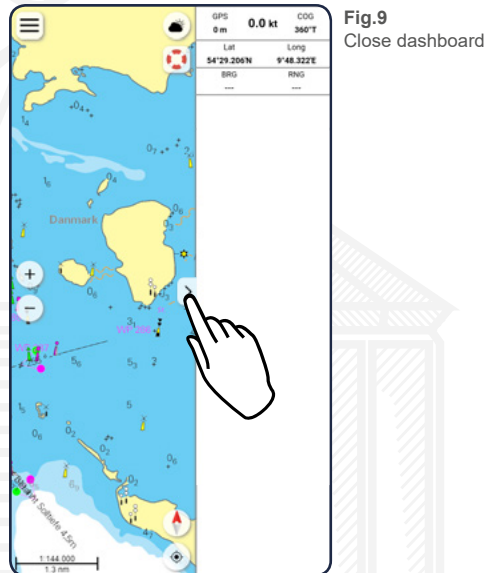
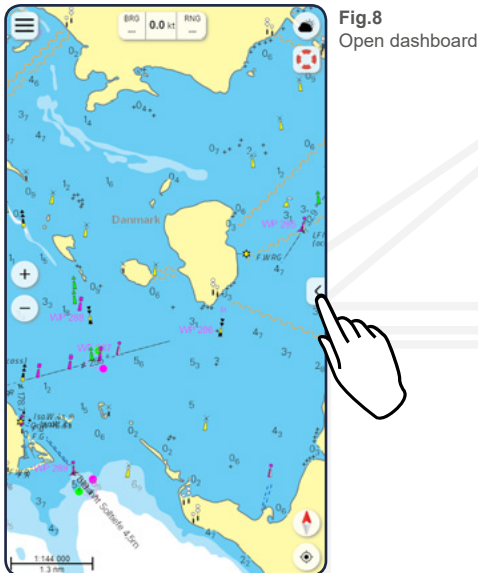
9. Ship's position and chart orientation

Click on the compass needle  to align the map to the north. Click on the location symbol  below the compass needle to jump directly to your ship's position on the map.

10. Dashboard

Use the arrow on the right side of the screen to expand or collapse the information panel. It provides you with various information such as your ship's position or the current wind conditions and also displays a list of existing AIS targets.


If you have activated the expert mode in the settings (see [18.1 Sail mode and App](#)), a bar with the current XTE will also be displayed.



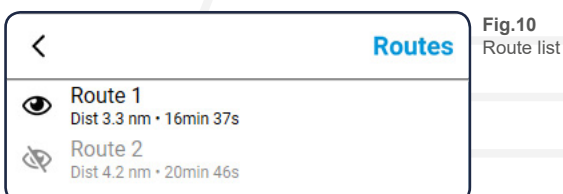
11. Routes

11.1 Display of route

Click on the „Route“ tab in the main menu to get to your route view. At this point you will see a list of all the routes you have already created. The green bar at the bottom of the route view allows you to create a new route. (see [11.2 Create new route](#)).

Click on the visibility symbol  in front of the respective route to hide it on the chart. The corresponding route will then be grayed out in the list and the eye symbol will be crossed out (see [Fig.10](#)). Another click on the now crossed out symbol shows the route on the chart again.

Click directly on one of the listed routes to jump to it on the chart and open the Edit menu at the same time (see [11.3 Edit route](#)).



11.2 Create new route

Click on the green bar with the plus icon at the bottom of the route view to create a new route. The route view will close and you will be taken to the chart.

To set the first waypoint, click on the place you want to set on the chart and hold the click for about two seconds. A blue bar will appear, which shows you how long you have to hold until the waypoint is created (see Fig.11). You can place the next waypoints in the same way and you can also set a waypoint between two already created points by pressing for about two seconds to press the corresponding route section. If you are satisfied with your route, click the „Done“ button at the bottom of your screen.

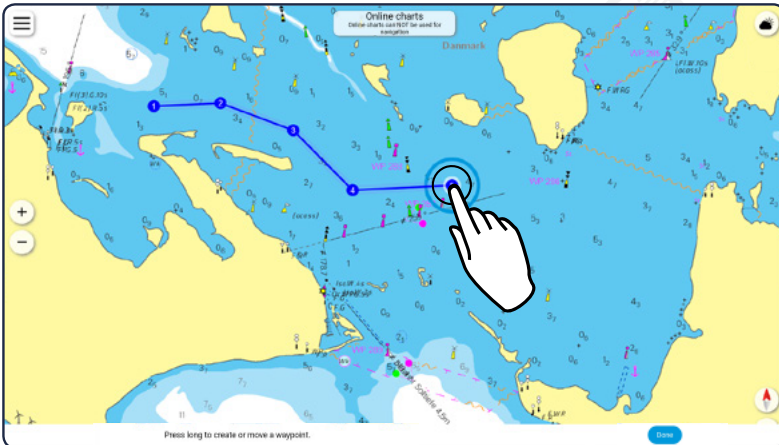


Fig.11
Press and hold to create new waypoint

Another way to create a route is the long press on the chart. A small menu will open in the appropriate place and you can select to create a new route or a new marker (see Fig.12).

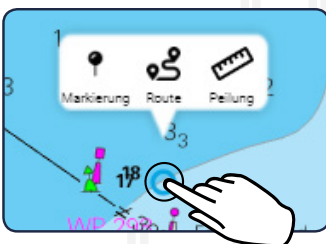



Fig.12
Press and hold to create route or marker

11.3 Edit route

To edit your route, either select it from the route view or click on the corresponding route directly on the chart (see Fig.13). In both cases, an editing menu opens on the left edge of the screen as well as three editing buttons directly on the route. In the upright view of mobile phones, the menu opens at the bottom of the screen and can be opened in full screen by clicking on the menu icon .

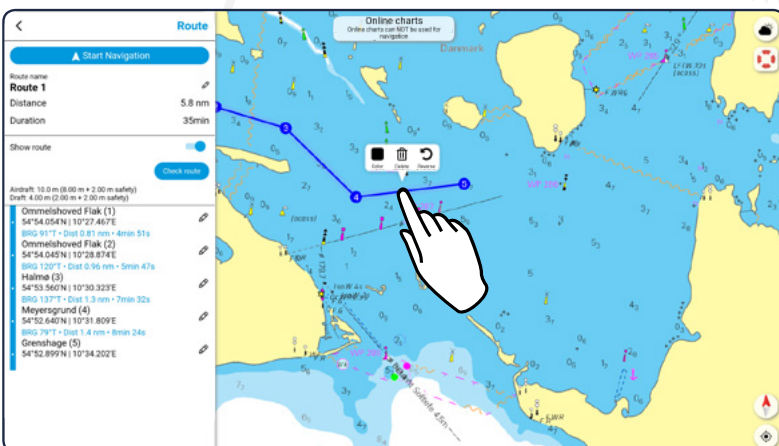


Fig.13
Open the editing menu of a route

11.3.1 Editing menu

In the editing menu you can start the navigation along the route (see [11.5 Navigation along the route](#)), change the name of the route - click on the editing icon ✎ next to the name - and you'll get the length of the route as well as the duration from the first to the last waypoint displayed. !



The duration displayed in the edit view is calculated using the speed information you have entered in the settings for your ship (see [18.1 Sail mode and App](#)). The duration may vary depending on your actual speed. Once you have started navigation, the duration is continuously recalculated and adjusted (see [11.5 Navigation along the route](#)).

You can also use a slider to specify whether the route should be displayed on the map or not, and you can check your route for obstacles/hazards (see [11.4 Check route](#)).

At the end of the edit view you will see all created waypoints and the distance between each waypoint. At this point you have the opportunity to adjust the position of the waypoints again. To do this, click on the edit icon ✎ next to the respective waypoint and enter the corresponding position data.

11.3.2 Interaction with the route

The three buttons on the route allow you to change the colour of the route ■, reverse the direction ↺ or delete the route 🗑.

To add more waypoints to your route, you have two options:

If you would like to add one or more new points at the end, click on the last waypoint of your route and then on the „Append“ button ●. You can now add further points as described in [11.2 Create new route](#) and confirm your changes with „Done“.

If you want to create a waypoint between two existing points, click on the corresponding route section and hold the click for about one second. A blue bar will appear showing you how long you need to hold until the waypoint is created (see [Fig.11](#)).

If you want to move one of the set waypoints to another location, click on the corresponding point and hold the click again for about one second.

To remove a waypoint, just click briefly on the point and then on the „Delete“ button 🗑.

11.4 Check route (only possible with vector charts)

The „Check route“ button allows you to check your route for obstacles and/or traffic bans using the draft and maximum ship height specified in the settings (see [18.1 Sail mode and App](#)). To do this, click on the button once. If your route leads through a corresponding area, the obstacle is indicated by a red mark at the respective route section as well as between the affected waypoints. !



Depending on the length/position of the route, the check process may take a few seconds.

If you have adjusted or changed your route again afterwards, you need to click on the „Check route“ button again for a new check.

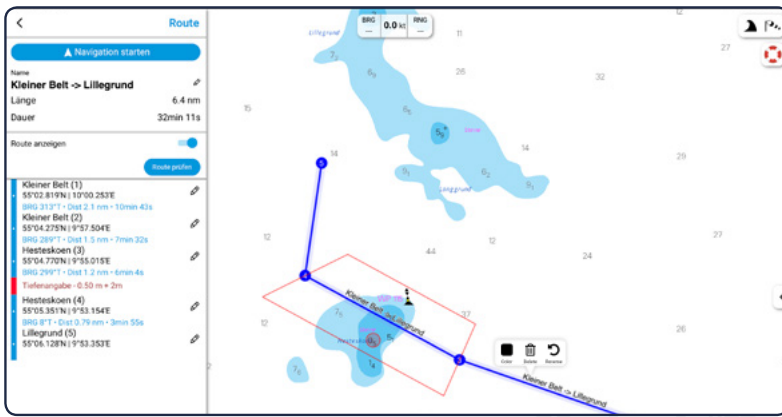


Fig.14
Presentation of a checked route

11.5 Navigation along the route

By clicking on the „Start navigation“ button, you start the navigation along the route. The editing menu closes and a bar appears at the bottom of your device showing the remaining distance and time until the route is completed.

The bar at the top of your device will show you - in addition to the permanently displayed speed - the direction and distance to the next waypoint.

You'll also see a dashed line from your boat to the first waypoint on your route.

To stop the navigation again, click on the button „Stop navigation“ below.

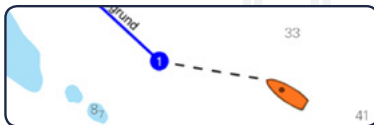



Fig.15
Started navigation to the first waypoint

12. Marker

Setting markers allows you to personally mark specific locations on the chart. In this way, you can identify for example special anchorages or very good fishing posts and find them quickly and easily on the chart.

12.1 Display of marker

Click on the „Marking“ tab in the main menu to go to your marking view. At this point you will see a list of all the markers you have already created. The green bar at the bottom of the marker view allows you to create a new marker (see [12.2 Create new marker](#)).

Click on the visibility symbol  in front of the respective marker to hide it on the chart (see [Fig.16](#)). The corresponding marker in the list will then be grayed out and the visibility symbol will be crossed out. Another click on the now crossed out symbol will show the marker on the chart again.

Click directly on one of the listed markers to jump to the respective marker on the chart and simultaneously open the editing menu for this marker (see [12.3 Edit marker](#)).

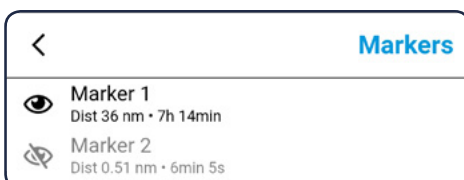


Fig.16
Marker list

12.2 Create new marker

Click on the green bar with the plus symbol at the bottom of the marker view to create a new marker. The Marker View will close and you will be taken to the chart.

To set a marker, click on the desired position on the chart and hold the click for about one second. A blue bar will appear indicating how much longer you need to hold before the marker is created. Another way to create a marker is the long press on the chart. A small menu will open in the appropriate place and you can select to create a new route or a new marker (see [Fig.12](#)).

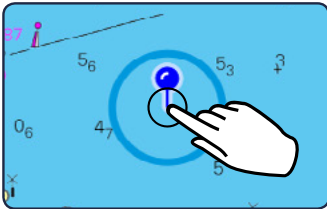



Fig.17
Press and hold to set marker

12.3 Edit marker

To edit your marker, either select it from the marker view or click on the corresponding marker directly in the map. In both cases, an editing menu opens on the left edge of the screen as well as two editing buttons directly on the marker. In the upright view of mobile phones, the menu opens at the bottom of the screen and can be opened in full screen by clicking on the menu icon .

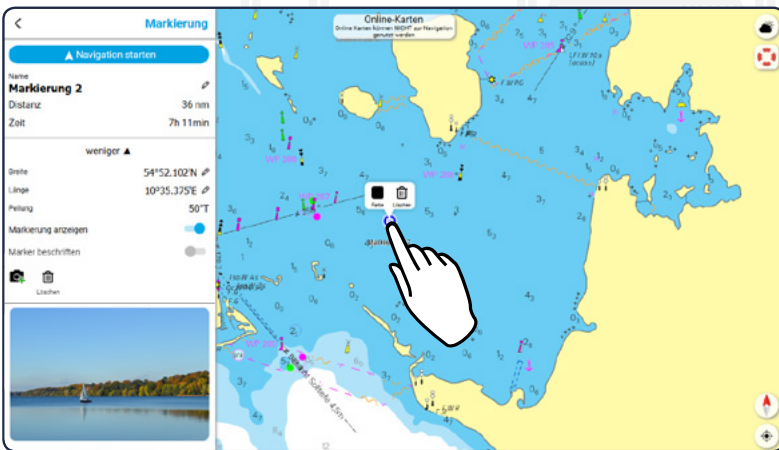



Abb.18
Bearbeitungsmenüs einer Markierung öffnen


12.3.1 Editing menu

In the editing menu you can start a navigation to the marker (see [12.4 Navigation to the marker](#)), change the name and the exact position of the marker - click on the editing icon  - and you can use sliders to determine whether the marker should be displayed on the map or not.

You also have the option of adding images to your marker (see [12.5 Add photographs](#)).

12.3.2 Interactions with the marker

If you want to move a set marker to another location, click on the corresponding marker and hold the click again for about one second.

To remove a marker, just click briefly on the marker and then on the „Delete“ button .


12.4 Navigation to the marker

By clicking on the „Start Navigation“ button, you start navigating to the selected marker. The editing menu closes and an automatically generated route to the marker is displayed. In addition, a bar appears at the bottom of your device showing the remaining distance and duration until the route is completed.

If you have activated the expert mode in the settings (see [18.1 Sail mode and App](#)), the bar at the top of your device will show you - in addition to the permanently displayed speed - the direction and distance to the next waypoint.

To stop the navigation again, click on the button „Stop navigation“ at the bottom.

12.5 Add photographs


If you want to add a photo to your marker, click on „More“ and then on the camera icon  located at the bottom of the editing menu. You will then be given the option of either taking a new photo or selecting an image directly from the gallery of your device.


If you have selected a photo, it will appear at the bottom of the edit menu. If you add more pictures, they will be placed underneath.

The icon of your marker receives a camera icon as soon as you add a picture to it.

12.6 Image gallery

If you have added at least one photo to your selection, it will be displayed as a preview at the bottom of the editing menu. Click on this thumbnail to enter the image gallery (see [Fig.19](#)). At this point the already added pictures are displayed in large size and you can move through the gallery by swiping to the right or left (only on mobile devices) or by clicking on the arrows on the right and left edges of the picture.

Via the menu  in the upper left corner of the picture gallery you can define the displayed photo as a preview picture. The corresponding image will then be displayed in the editing menu of the marker and if you have activated the public display of the marker, the respective photo will be displayed first when another app user clicks on your marker. The menu also allows you to split, delete or add more images to the currently displayed image.

Click on the cross  in the upper right corner to close the image gallery and return to the editing menu of the selection.

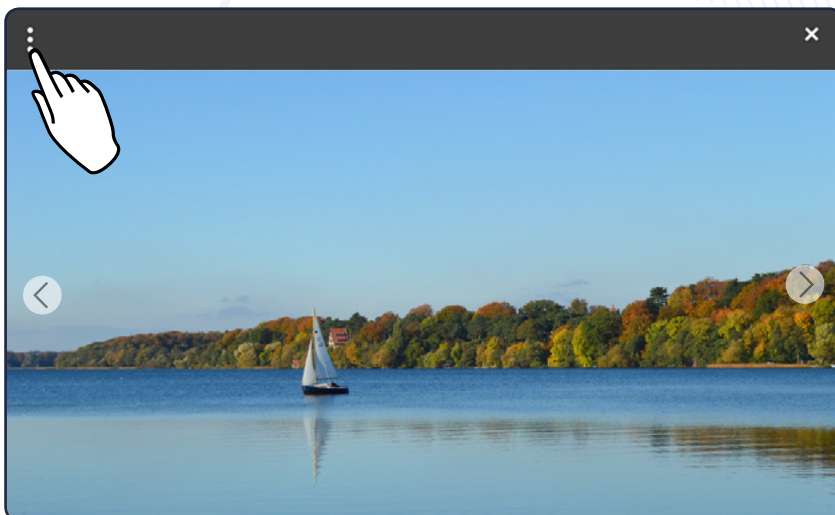


Fig.19
Open menu in image gallery

13. Ruler

To use the ruler, click on the chart for about one second. This will open a small menu and you can choose whether you want to create a new marker, a route or a bearing at this place (see [Fig.11](#)).

If you have selected the ruler using the mentioned menu, a bearing with start and end point will appear on the chart. Above the bearing is the direction, below the length and the travel time displayed. Two dashed lines help you align in the chart.

By holding and moving the start or the end point of the bearing, you can adjust the position and length.

If you would like to delete the bearing, click on the delete button at the bottom of your device (see [Fig.23](#)). If the delete button is not displayed, you have to select the bearing by clicking first.

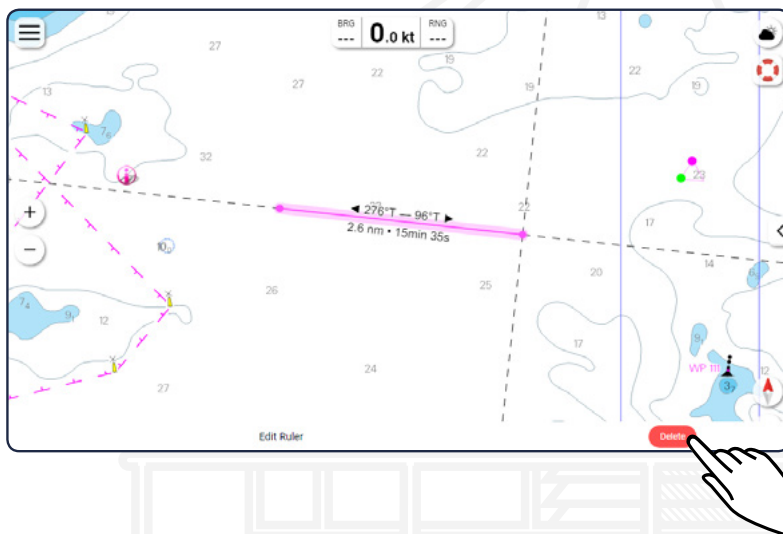


Fig.20
Delete selected ruler

14. Anchor Alarm

Click on the „Anchor alarm“ tab in the main menu to open the corresponding editing menu. The menu allows you to activate an alarm and show or hide it on the chart. You will automatically be taken to your current location and an alarm circle will appear with your location as the center (see [Fig.21](#)). A slider allows you to activate the alarm. If it is active, the alarm is permanently displayed on the map. If the alarm is deactivated again, the circle disappears on the chart.

By clicking on the button „Set on location“ you jump directly to your location on the chart and the anchor alarm is displayed with the ship as the center.

You can set the radius of the alarm in two ways: Either enter the size of the radius manually in the upper left corner of the editing menu or hold down the orange circle for about one second and then drag the circle to the right or left to increase it or make it smaller (see [Fig.21](#)).

You can move the alarm by holding down the blue circle in the middle of the alarm for about one second. If you are not able to click on the blue circle because your ship is exactly above it, please zoom further into the chart.

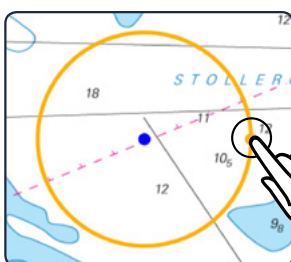


Fig.21
Press and drag to set the radius of the alarm

15. Charts

Use the slider to select if you want to see online maps. The use of online charts requires an internet connection.

If this function is active, you will always be shown all chart areas in the app, but you can not navigate with these charts. If you start a navigation, the app automatically switches to the offline charts, if you've already purchased nautical charts for the respective area. Otherwise, you will get a message that navigation with online charts is not possible.

If the function is not active, only the already acquired charts will be displayed and all other areas will be displayed as a gray area.

15.1 Add charts

By clicking on the tab „Add charts with product-id“ you will be taken to a new view where you can enter the 16-digit product ID of your chart and activate it this way.

Once you have entered the code in the the appropriate field, click on „Activate“. If the entry is incorrect, a corresponding message will appear and you can enter the product ID again. If the entry is correct, the corresponding chart will be displayed as an image and you can activate it by clicking on the „Install“ button. You will automatically be taken to the chart management (see [15.3 My charts](#)) afterwards.

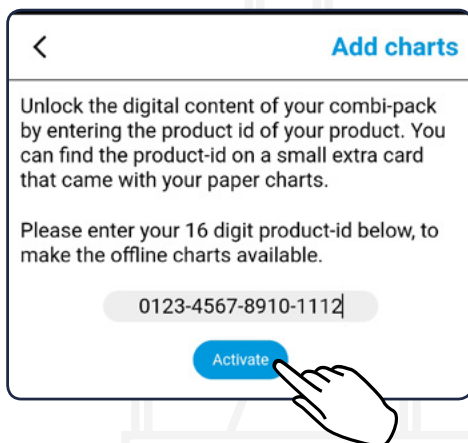


Fig.22
Add chart (the shown product ID is just an example)

15.2 Buy offline charts

The „Buy offline charts“ tab takes you to a selection page where you can choose between a digital subscription or paper and digital charts. !

! With the digital subscription, you receive the charts for one year, in purely digital form, directly in the nv charts app. The subscription is automatically renewed, but can also be cancelled at any time. Choose Paper & Digital if you want to purchase the cards as a combination pack of paper and digital charts directly in the NV Onlineshop.

15.2.1 Digital subscription

If you have clicked on the field „Digital subscription“, you will be shown all available nautical charts as frames on the map (not in the upright view for mobile phones) and in a list view.

You can select the charts either by clicking on the corresponding frame or directly in the list. Only one chart can be selected at a time. If you want to change your selection, either click on another frame or go back using the arrow at the top left and select another chart from the list.

Once you have selected a chart, it will be displayed with a picture and a short info text. You can buy the chart by clicking on the „Subscribe“ button, which also lists the price of the respective chart. This opens a system-specific window on which you have to confirm the purchase again.

15.2.2 Paper and Digital

If you have clicked on the field „Paper & Digital“, you will be shown all available nautical charts as frames on the map (not in the upright view for mobile phones) and in a list view.


You can select the charts either by clicking on the corresponding frame or directly in the list. Once you have selected a chart, your browser opens and you are automatically taken to the corresponding product in the nv online shop.

15.3 My charts


In the chart manager, all the charts you have already added are displayed in a list. The list is ordered according to the alphabet, whereby charts for which an update exists are always at the top and already loaded maps are displayed in front of non-loaded maps.


If there is a new chart edition, there is a link in orange under the corresponding chart. Click on this link to go directly to the respective chart in the nv online shop.

15.3.1 Loading charts

To display an added chart in the app, you have to download it. You can do this by clicking on the download arrow  on the right side of the chart. Under the arrow you will always see the file size and thus the required storage space of the chart to be loaded.

If you have started the download by clicking on the arrow, the text under the symbol changes to „Loading...“ and the progress of the download is shown in percent (see [Fig.23](#)).

When the chart is completely loaded, the arrow turns blue and points upwards . In addition, the loaded chart jumps up in the list so that all already loaded charts are always displayed at the top.

Another click on the now blue arrow releases the memory space that the loaded chart occupies on your device. 



The chart will not be deleted or removed from the list, it just jumps down and has to be reloaded if it wants to be used in the app again.

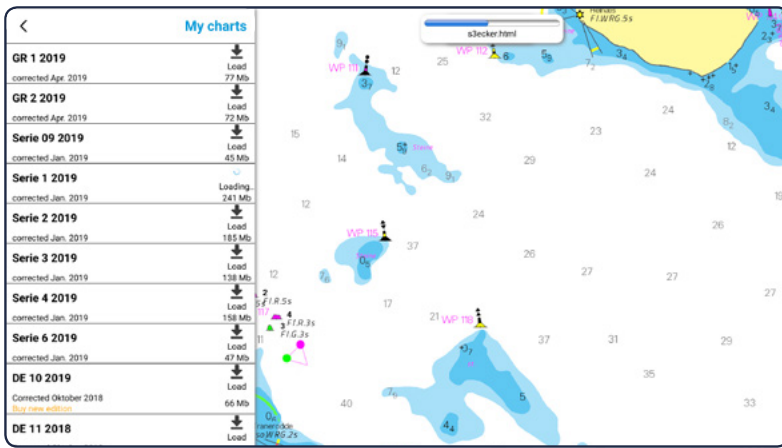



Fig.23
Display of the chart management and loading of series 1

15.3.2 Updating charts




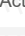
Charts with an update available are always displayed at the top of the list. The arrow on the right side of the corresponding chart is colored green and points to the right . By clicking on this update arrow you can update the respective chart. How much memory space the update requires is always shown below the arrow.

15.4 Chart settings

Please see [18.2 Chart settings](#).

16. Logbook

By clicking on the tab in the main menu, you will reach the logbook. If you have activated the activity recording in the settings (see [18.1 Sail mode and App](#)), your routes will automatically be saved as an activity and displayed in this menu as a list.

Click on the listed entries to go directly to the respective activity. Here you have the possibility to change the name , delete the activity , show it on the chart  or add + or delete  further waypoints. In addition, you can add photos to your activity (see [16.2 Add photographs](#)).

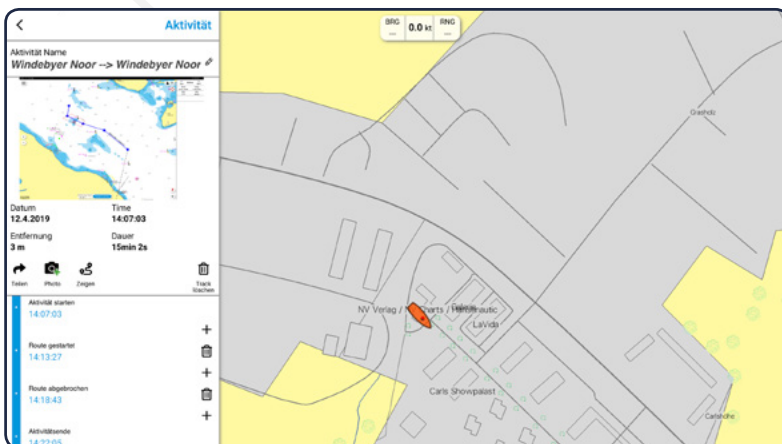



Fig.24
Activity display

16.1 Create activity

Click on „Start activity“ at the bottom of the logbook view. The current date and time are automatically created as the start of the new activity and you will be taken from the logbook view to the single view of the activity.

Finish the activity by clicking „Activity end“ below. The current time is created as the end point of the activity and as described above, you can use the plus icon + to add more waypoints between the start and end points.


16.2 Add photographs


If you want to add a photo to your activity, click on „More“ and then on the camera icon  located at the bottom of the editing menu. You will then be given the option of either taking a new photo or selecting an image directly from the gallery of your device.

If you have selected a photo, it will appear at the bottom of the edit menu. If you add more pictures, they will be placed underneath.

16.3 Image gallery

If you have added at least one photo to your selection, it will be displayed as a preview at the bottom of the editing menu. Click on this thumbnail to enter the image gallery (see Fig.25). At this point the already added pictures are displayed in large size and you can move through the gallery by swiping to the right or left (only on mobile devices) or by clicking on the arrows on the right and left edges of the picture.

Via the menu  in the upper left corner of the picture gallery you can define the displayed photo as a preview picture. The corresponding image will then be displayed in the editing menu of the marker and if you have activated the public display of the marker, the respective photo will be displayed first when another app user clicks on your marker. The menu also allows you to split, delete or add more images to the currently displayed image.

Click on the cross  in the upper right corner to close the image gallery and return to the editing menu of the selection.

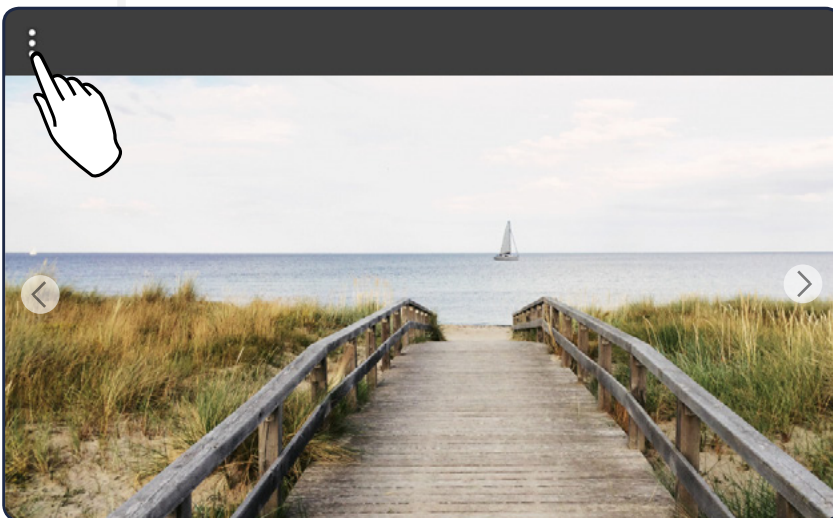
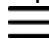





Fig.25
Open menu in the image gallery

17. On the location

You can select any position, every beacon and all buoys in the chart by press and hold on the object. to obtain information about these places. In addition to the option to create a marker or a route (see Fig.12), an info window opens on the left edge of the screen (in the upright view of mobile phones, the menu opens at the bottom of the screen and can be opened in full screen by clicking on the menu icon ) and you can view the various information by clicking on the appropriate headings.

The selected location is indicated by a blue flashing circle graphic in the map. A single click on the chart closes the info window again and the circle disappears.

Furthermore, you can select different objects in the map with a single click to open information to the corresponding places. The following objects are clickable:

-  Important information about the chart area
-  Port information
-  Photos and information about the location

17.1 Report information

If you have discovered an error in the listed data, you can report this error to us.

To do so, open the info window as described above and click on the „Report something about this chart“ button at the bottom of the window. This takes you to a new page with a large input field in which you can enter your error description. Describe the error as accurately as possible.

When you are finished and satisfied with your details, click the „Send“ button and you will receive a copy of your message via e-mail.


Once w've received your message, we will take care of correcting the error as soon as possible.

17.2 Highlighted lighthouse display

Click on a lighthouse on the chart for about a second to not only open the info window, but also to visually display the individual sectors on the map. The identifiers of the individual sectors are also recognizable in this way.

The visual presentation is closed as soon as you select another position or another location on the chart by press and hold.

17.3 Tidal information

If tidal information is available for certain locations on the chart, you will be shown a rhombus  at the appropriate position on the nautical chart. If you zoom into the chart, these rhombi will be filled at a certain point according to the tides. **!**



Is the upper part of the rhombus colored, the tide is in, is the lower part of the rhombus colored, the tide is out.

By clicking on the rhombus, a tidal curve opens at the upper edge of your device. You can close the graphic by single clicking on the chart.

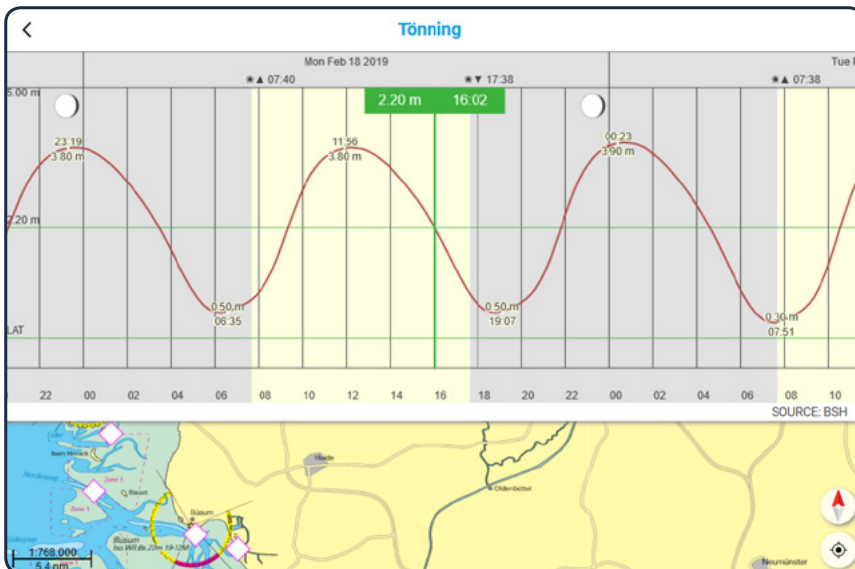


Fig.26
Tidal curve with Tönning as example

17.4 Navigation to the location

By clicking on the „Start navigation“ button, you begin navigating to the selected location. The editing menu closes and an automatically generated route to the location is displayed. In addition, a bar appears at the bottom of your device showing the remaining distance and duration until the route is completed.

If you have activated the expert mode in the settings (see [18.1 Sail mode and App](#)), the bar at the top of your device will show you - in addition to the permanently displayed speed - the direction and distance to the next waypoint.

To stop the navigation again, click on the button „Stop navigation“ at the bottom.

18. Settings

18.1 Sail mode and App

Record activity

Use the slider to select whether you want your route to be recorded automatically. If this function is active, your routes will always be saved as an activity in the logbook.

Nightmode

Use the slider to select whether night mode should be activated or not. If this is active, mainly dark colors are used in the app, so that you will not be dazzled by the screen of your device in the dark.

Boat name

Enter the name of your ship here. This name will also be displayed to other users of the nv charts app.

Boat speed

Enter the speed of your ship here. The entered speed is used to calculate the duration of a route that is displayed in the editing menu before the navigation along this route is started (see [11.3 Edit route](#)).

Boat draft

Enter the draft of your ship here. Based on the entered value, shallows are detected when checking a route (see [11.4 Check route](#)) and displayed as an obstacle/hazard area.

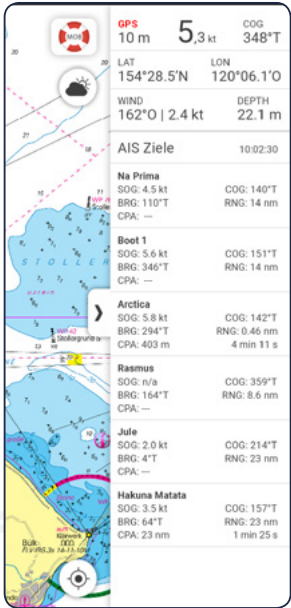
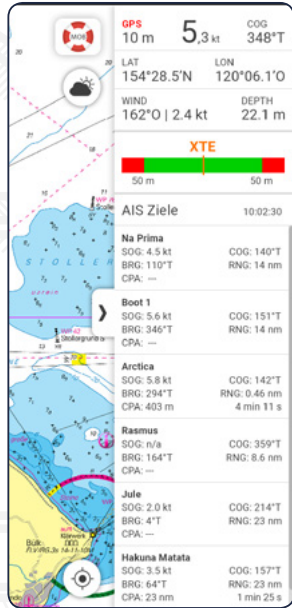

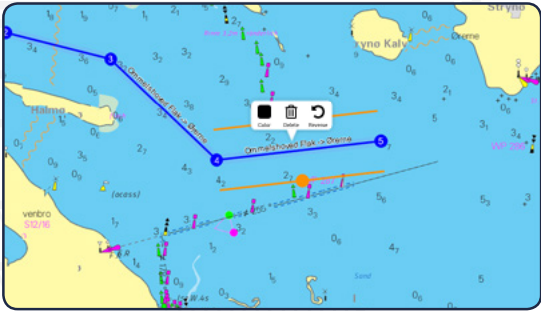
Boat air draft

Enter the maximum air draft of your ship here. Based on the entered value, height obstacles are detected when checking a route (see [11.4 Check route](#)) and displayed as a danger point.

App settings

Expert mode

Use the slider to select whether expert mode is to be activated. The following table shows the differences between the normal mode and the expert mode as a graphical comparison:

Normaler Modus	Expertenmodus
 <p>Dashboard</p>	 <p>Dashboard XTE</p>
 <p>Route display</p>	 <p>Route display with XTE</p>

Tab.3
Comparison of normal mode and expert mode

Language

Select via a drop-down menu whether you want to use the app in German, English or French.

Units

Units speeds

Use a drop-down menu to select the unit in which speeds are to be displayed.

Units soundings (vector)

Use a drop-down menu to select the unit in which the depths are to be displayed on your vector charts.

Units distances

Use a drop-down menu to select the unit in which distances are to be displayed.

Coordinates

Use a drop-down menu to select the unit in which coordinates are to be displayed.

Trackline

Heading line

Use a drop-down menu to select how far you want the forecast line of your course to be displayed.

Show tracks for

Use a drop-down menu to select how long the route you have travelled should be displayed on the chart.

Time interval

Use a drop-down menu to select the time interval at which the points for your course line are to be set.

Distance interval

Use a drop-down menu to select the spatial distance at which the points for your course line are to be set.

New track after

Use a drop-down menu to select the distance after which a new course recording is to be started.

Max. XTE (Cross Track Error)

Use a drop-down menu to select the maximum course deviation above which you want to be warned by a note.

18.2 Chart settings

Show vector charts

Use the slider to select whether you want to show vector charts or not.


Chartframes raster

Use the slider to select whether you want to show the raster chart frames or not.

Chartframes vector

Use the slider to select whether you want to fade in the frames of the vector charts.

On click navinfo

Use the slider to select whether the information markers  for the respective map area should be shown or hidden.

North up

Aligns the chart so that North is always at the top.

Lookahead

Aligns the chart so that your ship is in the lower quarter of the chart so that you are always shown more in the direction of travel.

Head up

Aligns the chart so that your course is always at the top.

Follow route

Aligns the chart according to the route being travelled.

More

Fontsize

Select the size of the font on your vector charts via a drop-down menu.

Symbolsize

Select the size of the symbols on your vector charts via a drop-down menu.

Safety contour

Use a drop-down menu to select which contour line should be highlighted in red.

Safety depth

Use a drop-down menu to select the security depth. All depths below your selection are highlighted in black on the chart.

Hide roads

Use the slider to select whether streets should be shown or hidden on the chart.

Hide cities

Use the slider to select whether cities should be shown or hidden on the chart.

Hide warning areas

Use the slider to select whether warning areas should be shown or hidden on the chart.

Hide military areas

Use the slider to select whether military training areas should be shown or hidden on the chart.

18.3 GPS/AIS

Position from

Use a drop-down menu to select how your position is to be determined.

The internal GPS describes the integrated GPS of your device. Normally, you can switch it on for any mobile device.

External GPS must always be additionally connected to your device - for example via Bluetooth or USB. AIS describes the use of the GPS via the AIS hardware.

Background tracking

Use the slider to select whether your activities should be recorded in the background.

More

Show AIS class A

Use the slider to select whether AIS class A targets should be displayed. These are mainly commercial ships.

Show AIS class B

Use the slider to select whether AIS class B targets should be displayed. These are mainly recreational or fishing vessels.

AIS headingline

Use a drop-down menu to select how far you want to display the AIS destinations' advance lines.

AIS track

Use a drop-down menu to select the steps in which the course recording of the AIS destinations should take place.

AIS label 1

Use a drop-down menu to select, which AIS label should be displayed above.

AIS label 2

Use a drop-down menu to select, which AIS label should be displayed below.

Choose WiFi router

Use a drop-down menu to select whether you want to save one, two or three routers. The corresponding IP addresses and port numbers of the routers can be entered in the following fields. Once you have entered the respective data, click on the „Connect“ button.

18.4 Weather

Under „Area“ you can define in which area the current and wind data should be displayed. Here you can set the settings to „Load automatically“ so that the data is always displayed on the currently selected map section.

If the „Update automatically“ slider is active, the data will be continuously adjusted and changed accordingly. !



We recommend that you only set this function to inactive if you want to save power on the device or if your device is experiencing display problems.

If the slider is active with „Show colors“, the water is colored according to the intensity when the current / wind display is activated. Set this slider to inactive to display only the knot information on the map.

18.5 Privacy

Activate Live-Position

Use the slider to select whether you want to activate the „Live-Position“. If this function is activated, your position and boat name will be visible to other app users.

Sync with other devices

Use the slider to select whether to enable synchronization with other devices. If you use the nv charts app on several devices - for example, on the PC at home and on the tablet on board - it makes sense to synchronize, so that your created routes, markers etc. as well as your already activated charts are displayed on all devices. If the synchronization is deactivated, your data will only be displayed on the device you are using.

The automatic synchronization happens about every 5 minutes. If you would like to synchronize your data faster, you can do so via the „Synchronize now manually“ button.

19. Feedback

By clicking on „Feedback“ in the main menu you have the opportunity to send a message directly to us. After clicking on the corresponding tab, you will be taken to a new window with an input field. Here you can write your message and send it to us via the button „Send feedback“.

You will receive a copy of your message by e-mail.

You can use the feedback function if you've noticed problems using the app, if you have suggestions for improvements or, of course, if you have noticed something particularly positive.

Your opinion helps us to further adapt and improve the nv charts app in the future.

20. Help

The „Help“ tab takes you to a gallery where you can click through pictures and videos to help you operate the app. In addition, you will find this manual at the end of the gallery.

21. About


By clicking on the corresponding tab, you can access the terms of use, the privacy policy and the licenses and can read them by clicking on the corresponding link. In addition, the current version of the nv charts app is displayed.

22. User profile

Click on the field with your username and e-mail address at the bottom of the main menu to view or change your profile.

22.1 With user account


Change profile avatar

Click on the camera icon  and choose to either take a new photo or select one directly from the gallery of your device.

Change username

Click on the edit icon  behind your username and customize it.

Change your e-mail address

Click on „Change Email“ and then on the edit icon  behind your email address and customize it. Following you have to enter your password again and by clicking on the button „Change Email“ you can confirm your customization. You will now receive an e-mail with a confirmation link to the previously entered address.

Change password

Click on „Change password“. First enter your old password and then your newly selected password, which you'll have to repeat once again. You can then confirm your customization by clicking on the „Change password“ button.

After the change, you will first be logged out of the nv charts app, in order to log in again with your new password.

22.2 Without user account

If you have accessed the nv charts app via the button „Create account later“ (see [4.3 Create account later](#)), you have the option to add your own account in the user profile by clicking the button „Create user account“. You will get back to the login screen of the app and can now follow the instructions in [4.2 Create account](#).