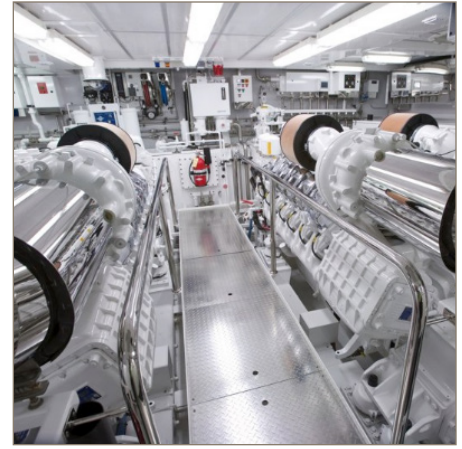


Multipass Fuel Polisher

P510MAM Fuel Filter Water Separator



Fuel Polisher Filtration Solutions

The New Racor Fuel Polisher removes contamination at the source - the fuel tank.

Most filtration solutions block contamination as it moves through the fuel system on the way to the engine.

As contamination builds, fuel filters will choke leading to inadequate fuel delivery to the engine, damage to injectors and other engine components, increased emissions, and decreased performance.

The Racor fuel polisher removes contamination from the fuel tank allowing the fuel system to run at peak performance.



Contact Information

Parker Hannifin Corporation
Racor Division
3400 Finch Road
Modesto, CA 95353

phone 800 344 3286
209 521 7860
fax 209 529 3278
racor@parker.com

www.parker.com/racor

By setting up a new fuel circuit around the fuel tank contaminants such as water, dirt and rust will be removed from the fuel delivery circuit, resulting in increased filter life, better performance, and less downtime to change filters.

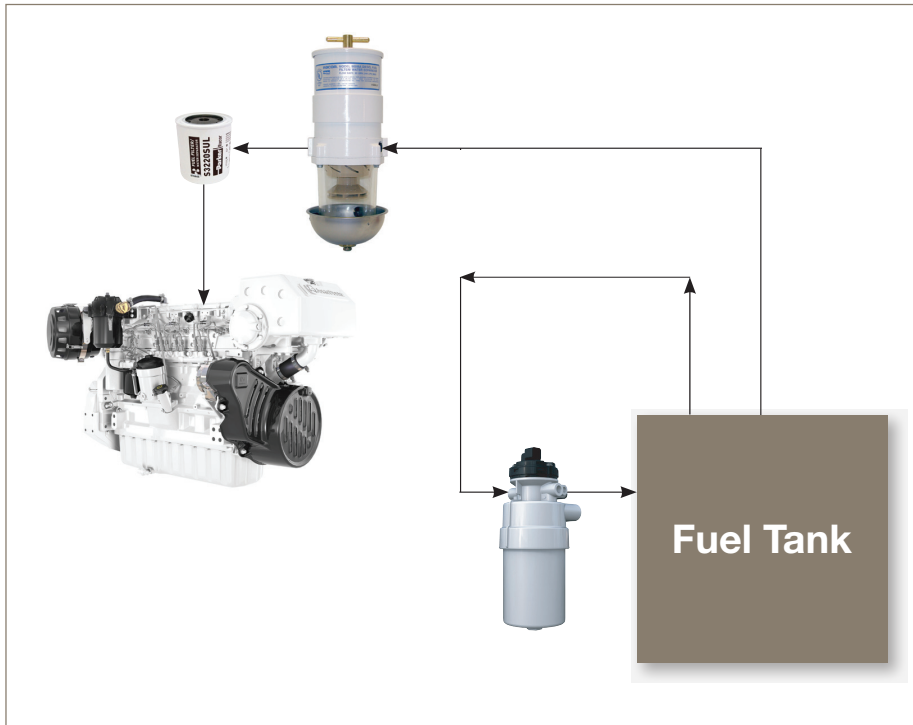
Fuel polishing can be used in Marine, Ag and Off-highway, Construction, Power-gen, and remote equipment.

- Water accumulates in fuel tanks by drawing in moist air during the day and condensing at night.
- Bio-fuels and additives can loosen deposits on fuel tanks.
- Contamination and debris through distribution.



ENGINEERING YOUR SUCCESS.

Fuel Polisher Flow



Product Features

- Bottom loading cartridge design
- Aluminum and stainless steel construction
- Approved for all bio-fuels to b20 and #2 USLD
- Aquabloc® media cartridges
- Flow rate to 72 GPH (272 LPH)
- Stainless steel water in fuel sensor
- UL 1105 fire test certified
- 26 PSI MAX pressure output
- Electric pump operates in both 12V and 24V applications
- Electrical wire harness with control switch included

Product Specifications

Maximum Flow Rate	72 GPH (272 LPH)
No. of Ports	2
Port Size	M16-1.5 ORB
Water Sensor	Standard
Micron Rating Available	10
Operating Voltage	12V and 24V applications

Markets



Available Part Numbers

P510MAM	FF/WS, 10 micron
R58065-2	2 micron, Replacement Element
R58065-10	10 micron, Replacement Element
R58065-30	30 micron, Replacement Element
RK 20725	12V Water Detection
RK 20725-24	24V Water Detection
RK 12870	12V Water Detection w/ Buzzer
RK 12871	24V Water Detection w/ Buzzer